

Compressor™

Analog to IP Video Encoder

DW-EN4K16



Default Login Information

Username: **admin** Password: **admin**

WHAT'S IN THE BOX

Quick setup and download guides		1 set	12V D/C and power cable		1 set
DW-EN19RE - 19" rack mount ears		1 set			

NOTE: Download all your support materials and tools in one place

1. Go to: <http://www.digital-watchdog.com/resources>
2. Search your product by entering the part number in the 'Search by Product' search bar. Results for applicable part numbers will populate automatically based on the part number you enter.
3. Click 'Search'. All supported materials, including manuals and quick start guide (QSGs) will appear in the results.



Attention: This document is intended to serve as a quick reference for the initial setup. It is recommended that the user read the entire instruction manual for complete and proper installation and usage.

Tel: +1 (866) 446-3595 / (813) 888-9555

digital-watchdog.com

Technical Support Hours:
9:00 AM - 8:00 PM EST, Monday through Friday

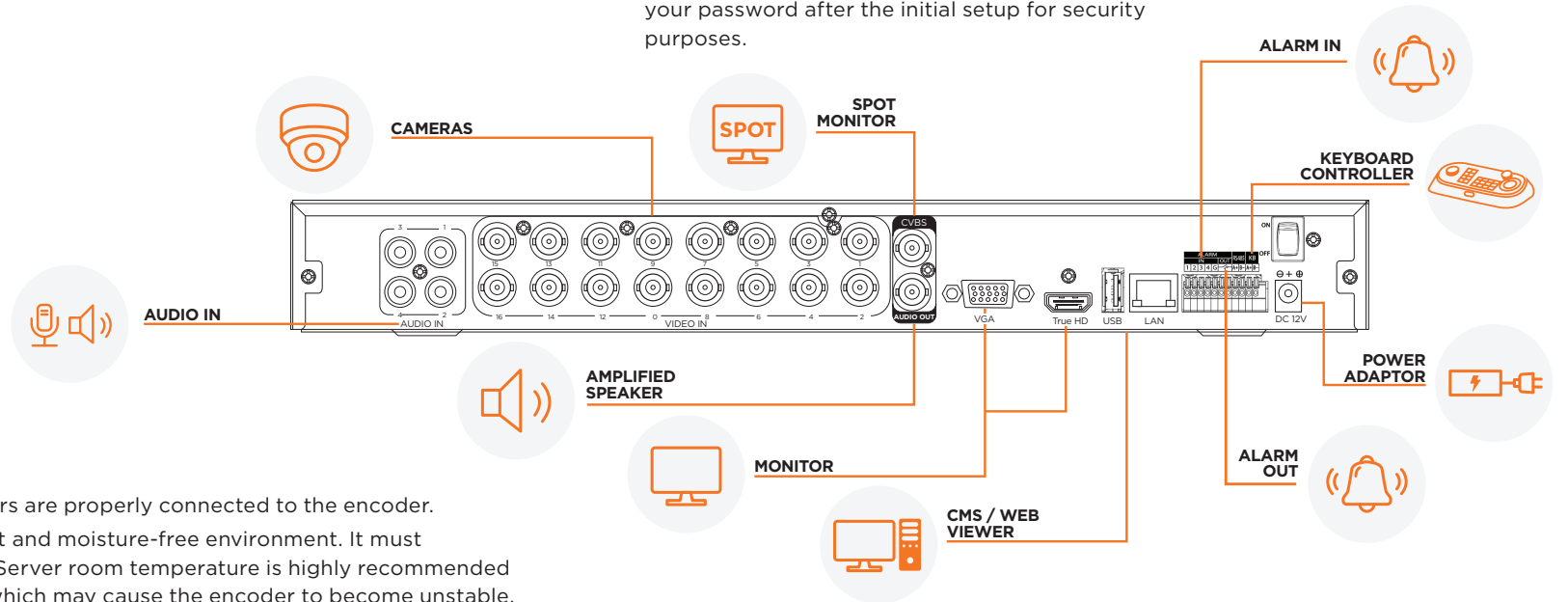
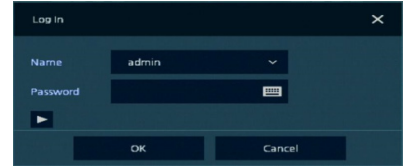
STEP 1 - CONNECTING THE ENCODER

1. Mount and install all necessary cameras and external devices. Refer to their manuals for additional information.
2. Place the encoder in its final position. See the installation tips below.
3. Connect all necessary cables to the encoder.
4. Once all additional devices have been properly connected to the encoder, connect the encoder to an appropriate power supply. The encoder will boot up automatically.

Model	Power Consumption
DW-EN4K16	12V DC, 2A Max. 15.6W

STEP 2 - POWERING UP THE ENCODER

1. When the encoder boots up, it will be in protective mode. This means you will not be able to access the encoder's setup menu until you log in using the proper username and password.
2. To unlock the encoder, right-click anywhere on the screen. The login screen will appear. (Default Username/Password: admin/admin)
3. When the encoder boots up for the first time, you will be guided through the Startup Wizard. It is highly recommended that you change your password after the initial setup for security purposes.

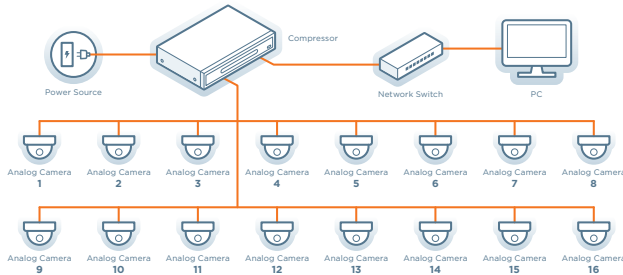


SAFETY TIPS

1. Make sure the cameras and the monitors are properly connected to the encoder.
2. The encoder should be placed in a dust and moisture-free environment. It must never be directly exposed to sunlight. Server room temperature is highly recommended to reduce the chance of overheating, which may cause the encoder to become unstable.
3. During the boot-up process, the encoder should not be interrupted by pressing any buttons on the mouse. Do not unplug the power adaptor or turn the encoder off during the boot-up process.
4. A UPS (Uninterrupted Power Supply) is highly recommended to prevent damage to the encoder during a power outage.

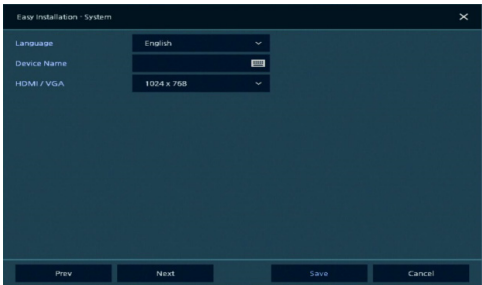
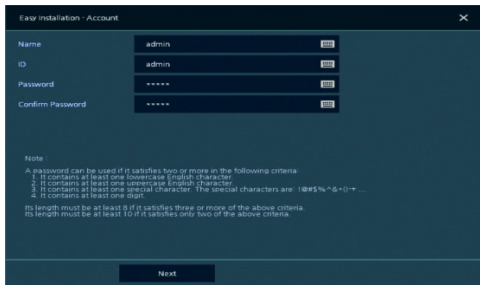
STEP 3 – COMPRESSOR CONNECTION EXAMPLE

- Below is an example of a proper connection between the Compressor, the cameras, and your video management software.



STEP 4 – STARTUP WIZARD

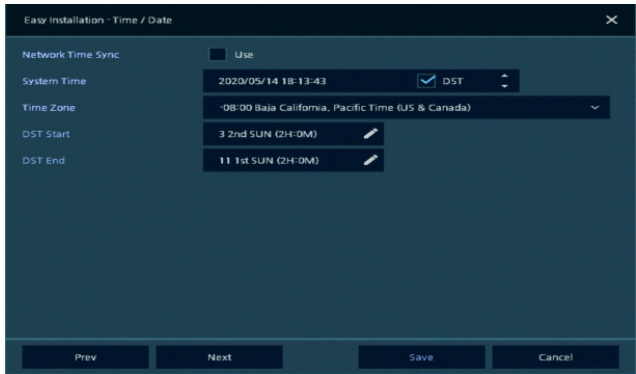
- Follow the startup wizard's instructions to setup the encoder's basic settings, setting up a new username and password, language and system settings, network settings and date/time settings. At any time you can skip steps, go back, or exit the wizard and setup the encoder manually.
- Account - Set a new username and password for the admin account. The default username and password are admin/admin, yet it is highly recommended that you change the password for security purposes. Press 'Save' and 'Next' to move to the next setup screen.
- System - In this screen, you can adjust the system's language, the name of the unit, adjust the ID connection for the unit (if you are connecting a keyboard), and adjust the resolution for both true HD output and VGA local outputs. Press 'Save' and 'Next' to move to the next setup screen.



- Set the encoder's network settings to match your network's requirements. It is recommended to set the network type to DHCP and let the encoder auto-detect the network's settings. Then, change the type to Static. Please contact your Network Administrator for additional information. Press Save and Next to move to the next step.



- Time/Date - Use this screen to set the encoder's date and time, including time zone, daylight savings and time sync. Confirm that the network box is checked. If needed, set the encoder to sync its time automatically with an external NTP server.



- Easy Installation - Check the box to run the Installation Wizard every time the system starts.
- Close the dialog box when complete.

STEP 5 – WEB VIEWER

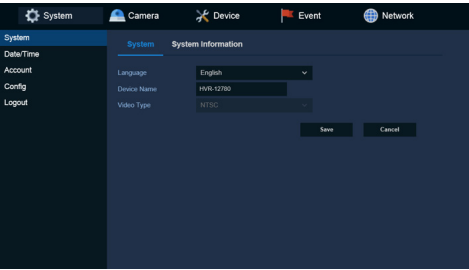
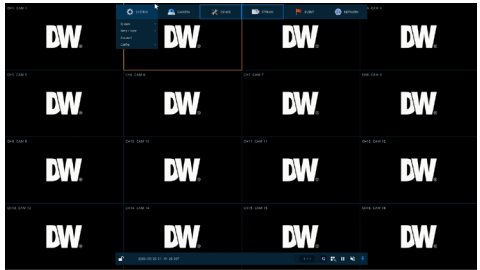
Once the network settings for the encoder have been setup properly, you can access the encoder's web viewer for live monitoring and remote setup. To open the web viewer:

- Open a new web browser window and enter the encoder's IP address in the address bar. Press enter to proceed.
- Enter the encoder's user-name and password (default admin/admin). Select to go to the live viewer or the remote setup by pressing the corresponding button.



NOTE: It is highly recommended that you change the default admin user-name and password as soon as initial setup is completed.)

- To use the web viewer for remote viewing, download and install Java from the pop-up window. Once the Java file is installed properly, the monitoring view will appear.
- To use the web interface for remote setup, press the setup button in the login screen. The setup window and options are the same as the local encoder setup.



NOTE: See the full manual for additional installation options, connecting external devices, web viewer setup, camera settings and more.