



Quick Start Guide



Real-Time 960H Recording

VMAX960H



Please note that the Accessory Kit and Shipping Box contain the items :

| Items | Photo | Quantity | Items | Photo | Quantity |
|-----------------------------------------|-------|----------|------------------------------|-------|------------------------------------------------------------|
| User Manual (DVR & Software) | | 1 Set | I2V DC Adaptor & Power Cable | | 1 Set |
| CD (DVR & Software) & Quick Start Guide | | 1 Set | Rubber Mount & Ground Screw | | 1 Set (4 Pieces) 1 Set (1piece VMAX960H Rear / 1piece) |
| IR Remote Control | | 1 Set | USB Mouse | | 1 Set |

Default Login Information (ID: Admin / No Password)

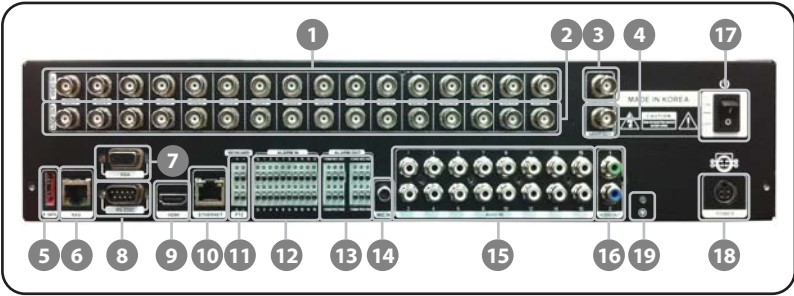
ATTENTION PLEASE !!!

This document is intended to serve as a quick reference page for initial set-up. It is recommended that the user read the entire instruction manual before beginning.

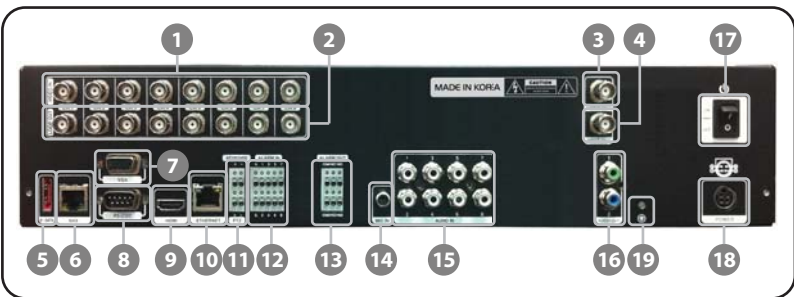
MADE IN KOREA

BACK / FRONT PANEL

16CH Back Panel



8CH Back Panel



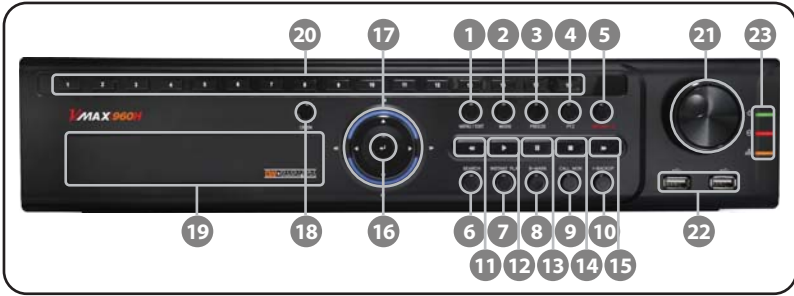
| No. | I/O | Description |
|-----|----------------------|-----------------------------------------------------------------------------------------------------|
| 1 | VIDEO-IN | Camera Input 1"8/ 16 (Auto Detect NTSC/ PAL) |
| 2 | LOOP OUT | Built-in Looping Output 1"8/ 16 |
| 3 | VIDEO OUT | Composite Output |
| 4 | SPOT OUT | Programmable Digital Spot Output |
| 5 | e-SATA | e-SATA for External Storage Device |
| 6 | NAS | Network Port for Network Attached Storage (10/100) |
| 7 | VGA | VGA Output |
| 8 | RS-232C | Serial Port for External Devices |
| 9 | HDMI | True HDMI Output |
| 10 | ETHERNET | Gigabit Network Port (10/100/1000) |
| 11 | PTZ / KEYBOARD | 2 x RS-485 for PTZ Cameras, Keyboard Controller, and FaceStamp Interface |
| 12 | ALARM IN | Alarm Input 1"8/16 |
| 13 | ALARM OUT | Alarm Output (2 Relay Outputs & 2 TTL Outputs) |
| 14 | MIC IN | Microphone Input |
| 15 | AUDIO IN | Audio Input (Amplifier) |
| 16 | AUDIO OUT | Audio Out 1 (Green): Main Audio Output (Amplifier) Audio Out 2 (Blue): Audio Output for Head Set |
| 17 | POWER ON/ OFF SWITCH | Power Switch On/ Off |
| 18 | POWER | Main Power Supply connection (Default: 12V. 9A) |
| 19 | | Ground for DVR's Protection (Installed in Rack-mount Kit) |

Initial Setup

When all necessary cameras and monitors are setup in their permanent locations, connect them to the DVR. Use the diagram in the Quick Start Guide and manual for additional information.
When all connections have been made, connect the DVR to an appropriate power supply. The DVR will boot up automatically.

INSTALLATION

8/16CH Front Panel (W)428 x (H)93 x (D)446mm



| No. | Buttons | Functions |
|-----|-----------------------|--------------------------------------------------------------------------------------------|
| 1 | Menu / Exit | Menu/Exit Button |
| 2 | Mode | Change Screen Display Mode |
| 3 | FREEZE | Enable/ Disable Freezing Video Screen |
| 4 | PTZ | Show/ Hide PTZ Control |
| 5 | Instant Record Button | Emergency Recording |
| 6 | Search | Go to Search Mode |
| 7 | Instant Play | Initiate Instant Reverse Playback |
| 8 | B-Mark | In Live- Go to Bookmark Search In Playback- Start/ End Bookmarking Video |
| 9 | Call Monitor | Select a Camera Channel to set for Spot Output in Full Screen Mode |
| 10 | I-Backup | Instant Backup |
| 11 | ◀ | Fast Rewind |
| 12 | ▶ | Playback, Reverse Playback |
| 13 | ⏸ | Pause in Playback |
| 14 | ■ | Stop Playback |
| 15 | ▶▶ | Fast Forward |
| 16 | ⏮ | Enter Button (Execute Selected Menu & Designated Value) |
| 17 | ⏮⏭⏭⏮ | Direction Button to Control the Menu |
| 18 | Open | Open & Close DVD-RW |
| 19 | DVD±RW Bay | DVD-RW Door |
| 20 | 1"16 | Channel Selection Button from Ch1 to Ch16 |
| 21 | Jog / Shuttle | Jog & Shuttle to Control Playback Speed |
| 22 | ⏮⏭ | 2 x 2.0 USB Ports (Mouse, Backup, F/W Upgrade) |
| 23 | LED Indicator | Indicates the DVR's Status. Power On (Green), Recording (Red), Network Connection (Orange) |

DVR Installation Safety Tips

- Make sure the cameras and the monitors are properly connected to the DVR.
- The DVR should be placed in a dust and moisture free environment. It must never be exposed to direct sunlight. Server room temperature is highly recommended to reduce the chance of overheating. Overheating may cause the DVR to become unstable.
- During the boot process, the DVR should not be interrupted by pressing any buttons on the front keypad, mouse, or remote controller. Do not unplug the power adapter or turn the DVR off during the boot process.
A UPS (Uninterruptable Power Supply) is highly recommended to prevent malfunctioning of the DVR during a power outage.

INITIAL SETUP

Quick Startup Wizard

The Quick Startup Wizard is designed to make the installation process of your new DVR as quick and easy as possible. This startup wizard will automatically appear when you first boot up your DVR. It will guide you through setting up some of the DVR's more critical features required for its proper function.
The Quick Startup Wizard will take you through setting up the Date & Time, Recording Setup, Network Setup and Quick Setup.
If you do not want to follow the Startup Wizard you can disable it by clicking the [CANCEL] button and adjusting your settings manually via the DVR's main menu.



Main Menu

The Main Menu (Setup Menu) system includes six (6) sub-menus: System, Device, Record, Network, Backup, & Q. Setup. To access the Setup Menu, press the [Menu] button on the front panel of the DVR, or right-click anywhere on the screen and select 'Setup Menu'.
The DVR's default user ID and password are: admin/ no password.

Navigation

Use the supplied USB mouse for easy operation. Alternatively, use the following front panel buttons or remote controller key pad.
- Use the [Enter] button to select or enter edit mode for a highlighted selection.
- Use the directional keys ⬆⬇⬅⬇ to move through a menu or list.
- Use the [Menu] button to enter or exit a menu or setup window.

Date and Time Setup

- Go to the System Menu and select SYSTEM INFO. Click on the pencil icon next to the Date/ Time to enter edit mode.
- Select the appropriate display format from the [DATE/TIME FORMAT] drop down lists.
- Select the appropriate date and local time in the [DATE/ TIME] section.
- Select the appropriate time zone from the [TIME ZONE] drop down list.
- If applicable, enable Daylight Savings mode.



Formatting the Hard Drive Disk

After adjusting the time and date for the first time, it is highly recommended to format your Hard Disk Drive.
1. Go to the System Menu and select the HDD submenu.
2. Select the Check box next to the HDDs.
3. Click the [HDD Clear] button.
4. When the HDD formatting is complete, exit the main menu and reboot the DVR to save all changes.

DW RECORD SETUP

DW Recording Configuration

- Go to the Main Menu and select RECORD.
- In the record window, select the Record Setup submenu.
- Choose the desired resolution, frame-rate, and quality from the drop-down list for each of the recording modes (Continuous/ Event).
- Individually configure the settings for each channel, or use the [COPY SETTINGS] button to apply changes to multiple cameras.
- To setup a specific recording schedule, go to the SCHEDULE submenu. You can setup the record schedule by applying different recording modes at different days and times.

- Select a record mode from the options on the top of the screen.
- Using your mouse, click, hold, and drag to select multiple days & hours.
- You can setup a unique recording schedule for each channel or apply the same recording settings to all channels.
- You can setup special days as "holidays" either by their date (December 24th) or by their time of the month (Third Thursday of November).



- You can configure the Live Stream (Resolution/FPS/Quality) setting independently by clicking on the Live Stream menu tab.

DW Quick Setup

The Quick Setup Menu offers an automatic recording and HDD calculator. By entering your anticipated recording days, or the desired recording resolution, the DVR will provide you with the estimated days recorded on your current HDD space.

- Select how many days you wish to record on your current storage. The system will populate recommended recording resolution, frame-rate, and quality.
- Select the desired recording specifications. The system will display the number of days that will be recorded on your available storage.



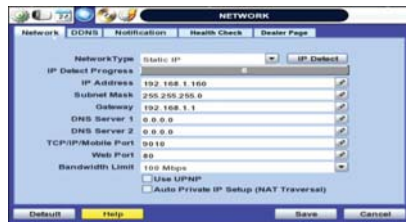
Note: To manually setup recording configurations, Quick Setup must be DISABLED. If the "Use Quick Setup" option is enabled, the system will ignore all other configurations set manually.

DW NETWORK SETUP

DW Network Setup

- Go to the NETWORK menu in the menu window.

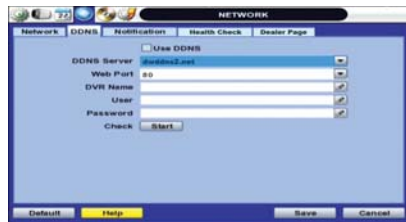
Note: The following information are general guidelines. These may vary by network and router specifications. Contact your installer or ISP for additional information.



- In the [Network] menu set "Network Type" to [Dynamic IP] and click [IP DETECT].
- Once the system generates all the information based on your network requirements, you can change the Network Type to Static and save all the changes as static. A static IP address will not be changed by the network. Contact your Internet Service Provider for additional information.
- Some internet service providers block port 80 in their customer's routers. It is recommended to change the web port number to 81 or 82.
- Access your router by entering its external IP address in your web browser (this information can be found by running an ipconfig command on your computer's Command Prompt. The router's external IP address is the GATEWAY address.) This step is only necessary if you are planning to connect to your DVR from a different network, over the internet.
- Check the DHCP settings in your router and setup the DVR for external connections by performing port forwarding. Contact your Network Administrator and review the manual for more information. Visit www.portforward.com For additional information on how to setup port forwarding in your specific router model.
- Once the router settings have been configured correctly, open an internet explorer page and enter your router's external IP address:DVR's port number (Example: 72.243.193.215:81). See "Web Viewer" in this QSG for more information.

DW Registering DDNS

- Check USE DDNS to enable. (Make sure the DVR's web port has been properly setup in your router).
- Select DWDDN2.net (default).
- Enter a name for your DVR and click the CHECK button. If the name is available in the server's database, the system will display the following message: "THIS DVR NAME CAN BE USED". Click SAVE to save all changes.
- To use your DDNS, open an IE page and enter the DDNS in the address bar: DVRname.dwdns2.net:pot-number.



DW SPECIAL FUNCTIONS

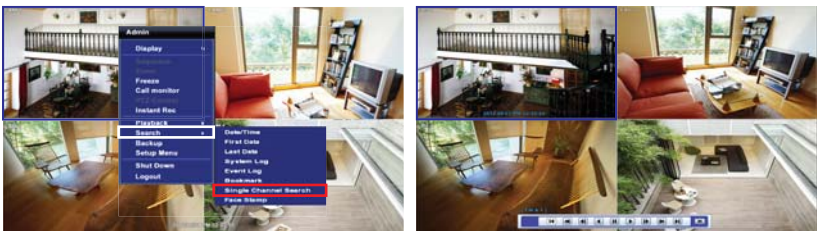
DW 5x Signal Extender

The adjustable 4CH built-in 5x Signal Extender enables to extend the distance coverage upto 2950ft (900m) between the camera and the DVR. (From CH1 to CH4 only)



DW Single Channel Playback in Live Mode

To view a single channel's playback in live mode, right-click on the channel you want to view in playback, and go to Search ➔ Single Channel Search. The playback navigation buttons will appear at the bottom of your screen, and the channel will be marked by a blue frame, indicating it is in playback mode.



DW Health Check

The VMAX960H offers a uniquely true DVR health monitoring, with pop-up messages and e-mail notification on video loss, recording failure, and storage failure.

To setup:

- Check the box next to "Enable Health Check"
- Check the box next to the conditions you would like to be notified on.
- Set the occurrence intervals. (For Example: when video loss occurs more than 1 time a minute)
- Select whether to receive a popup message when conditions are met.
- Go to Network ➔ Notifications.
- Under e-mail notifications, make sure the Health Check option is enabled.

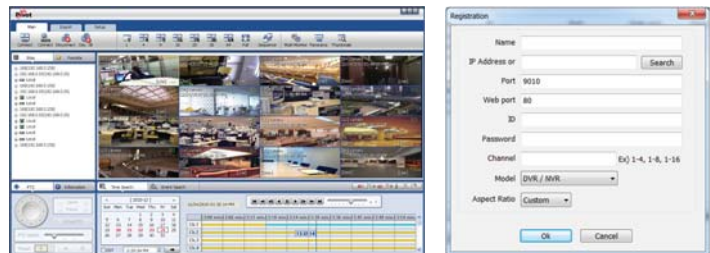
When any of the failures occur beyond the set conditions, the system will display a popup alert and send an e-mail notification.



DW REMOTE CLIENT

DW Pivot CMS (Central Monitoring Software)

The Pivot CMS is included with the DVR. Install it on your computer from the accessory CD. After installation, double-click on the Pivot shortcut to launch the software. (Pivot's user/ Password: Administrator/ no password)



To Add a site:

- Right-click on the device list panel and select "Add Site"
- Make sure VMAX SERIES is selected from the Model drop-down list.
- Enter your DVR's information:
 - Name
 - IP Address. If you are trying to connect to the DVR from a PC that is in the same network as your DVR, click "Search" to auto-discover your DVR.
 - Port/ Web Port- will be filled out to Default(9010/80, consecutively).
 - ID and Password- to access the DVR.
 - Channel- enter the span of channels available on your model (ex. I-8/ I-16).
- Press 'OK' to save, or 'Cancel' to delete all changes.
- To connect to the newly added site, click on the name and drag it into the viewing area. Select to view Live/ Playback.

DW Web

Open an Internet Explorer web page. To view the DVR's web page using Google Chrome, please install the "IE Tab" add-on. After entering the DVR's IP address, press the add-on's button on the top right-hand corner of the web viewer to enable the web viewer to be displayed on Google Chrome.

Enter the User ID and Password and click Enter. (Default User/ Password: admin/ no password). The DVR's web viewer will be displayed.



Note: If you are using IE, install all Active-X Control notifications to view video from the DVR.

DW Help

The "HELP" button will help you understand how to setup several important settings such as DDNS, NOTIFICATION, BACKUP, SCHEDULE, NETWORK, and CAMERA. For example, if you need help about how to set "BACKUP", Click "HELP" button at the right bottom of the BACKUP menu.

