

Blackjack® NAS

Network Attached Storage

8 Bay

DW-BJ8NASR40T
DW- BJ8NASR80T



Default login Information for Blackjack® NAS™





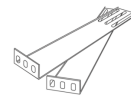

Username : **admin**

Password : **admin1234**

SUPPLIED ITEMS

Please unwrap the product, and place the product on a flat place or in the place to be installed.

Make sure that you have following items supplied. If any of these items are missing or damaged, notify your vendor immediately. Keep the packing utilities for moving or storage purposes.

| | | | |
|---|----------------------|---|--|
|  | Network Cable 1 set |  | Front door lock key |
|  | Power Cable 1 set |  | HDD Screws (1 bag) |
|  | Rack Mount Kit 1 set |  | Rack Mount Kit Screws (1 bag) Rack screws not included |

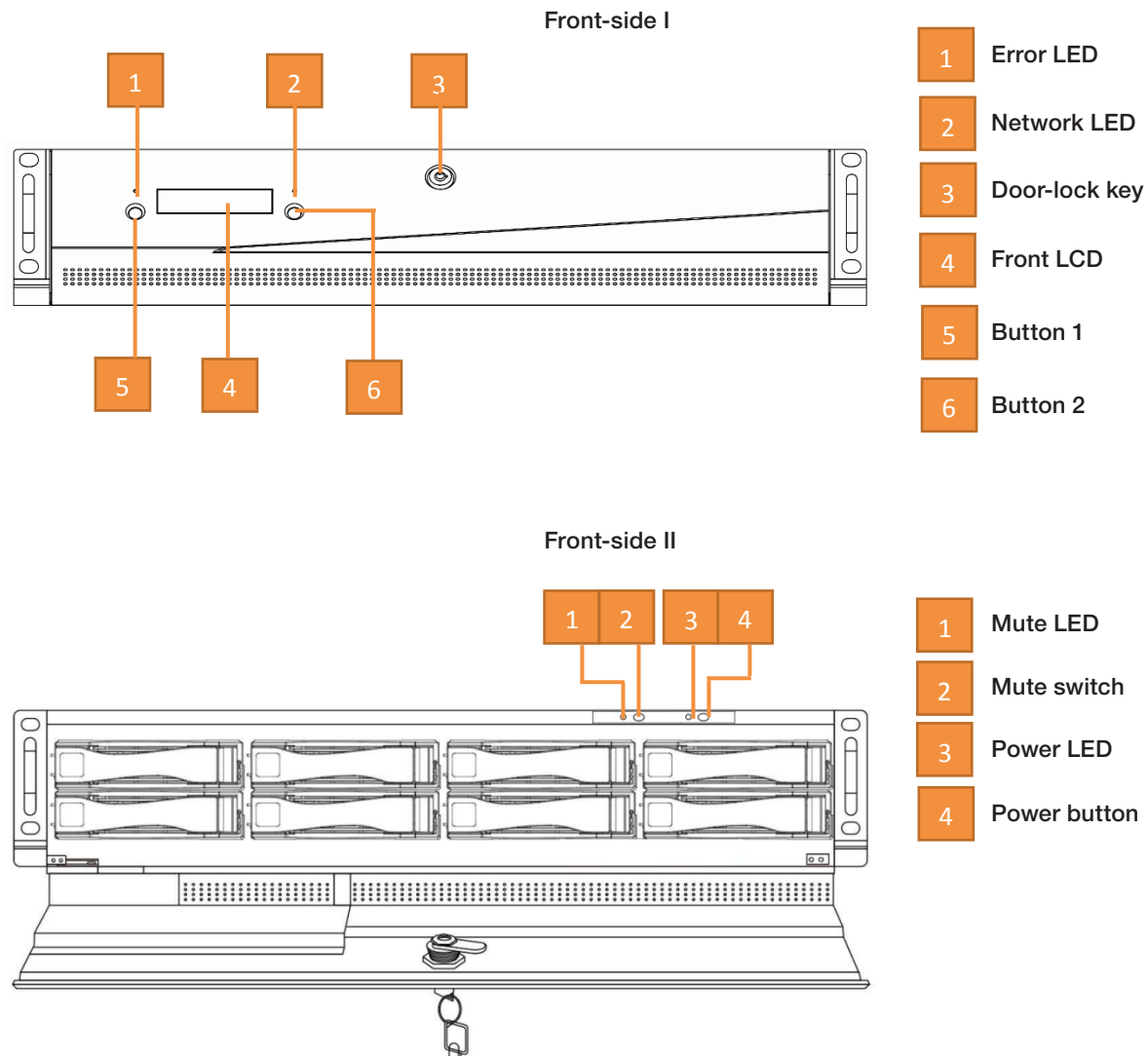
NOTE: Download all your support materials and tools in one place.

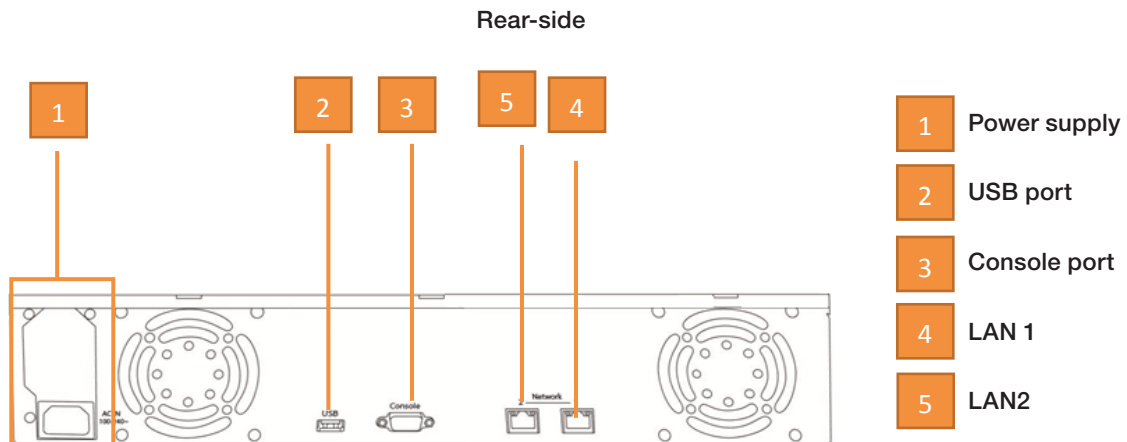
1. Go to: <http://www.digital-watchdog.com/support-download/>
2. Search your product by entering the part number in the **'Search by Product'** search bar. Results for applicable part numbers will populate automatically based on the part number you enter.
3. Click **'Search'**. All supported materials, including manuals, quick start guide (QSG), software and firmware will appear in the results.

Attention: This document is intended to serve as a quick reference for initial set-up.

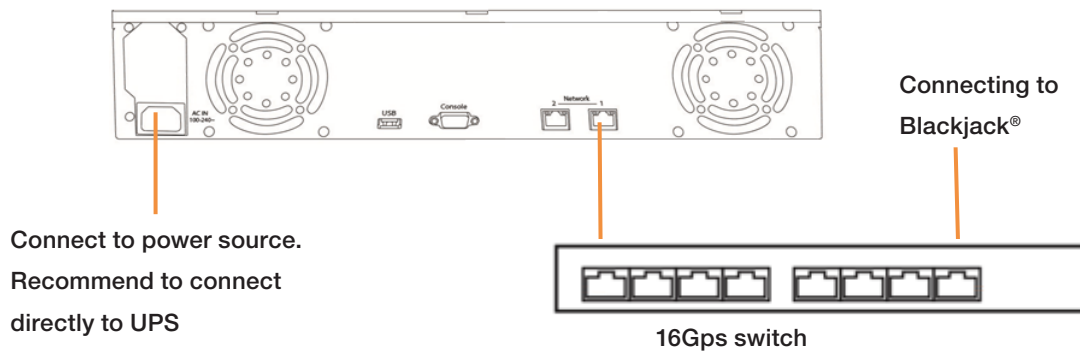
See the DW Spectrum[®] IPVMS full manual for more information of features and functionality.

HARDWARE





SETTING UP THE BLACKJACK[®] NAS RACK



STEP 1: Connecting the network cable

1. Locate the network switch where the DW Spectrum[®] IPVMS server is connected to.
(Blackjack[®] NAS RACK must be on the same network as the DW Spectrum[®] IPVMS server where it will be added to).
2. Connect the network cable to the network port 1 and to the network switch.

NOTE It is required to use Gigabit switch

STEP 2: Turn on the system

1. Connect the power cable of the device to the power source.
2. Press the power button for 3 seconds on the front panel.
 - The booting status can be viewed from front LCD.
 - Booting is complete and ready to use when LCD displays

RAID GROUP1
RAID5 OK

STEP 3: Configure network (for Windows)

The screenshot shows the DW IP Finder software interface. Labels with lines pointing to specific parts of the interface include:

- Search for Devices:** Points to the 'Find Devices' button.
- Filter Search Results:** Points to the 'Filter' button.
- Camera's Live Thumbnail View:** Points to the 'Thumbnail' button.
- Device Name, Model, IP Address, and MAC Address:** Points to the columns in the device list table.
- Firmware Upgrade:** Points to the 'FW Upgrade' button.
- Device's Network Settings:** Points to the 'Network' dropdown menu.
- Select which Network to Scan:** Points to the 'Network' dropdown menu.
- Show/Hide Thumbnail View:** Points to the 'Thumbnail' button.
- Devices Firmware Version:** Points to the 'Version' column in the device list table.

| Name | IP Address | Model | MAC Address | Network | Gateway | Port | DHCP | Version |
|--------------|-----------------|--------------|-------------------|---------------|---------------|------|----------|---------------|
| DWC-MB46ALPR | 192.168.150.111 | DWC-MB46ALPR | 00:0D:F1:20:A4:28 | 255.255.255.0 | 192.168.150.1 | 80 | Disabled | A2.01.02_2011 |
| DWC-MB45DA | 192.168.150.72 | DWC-MB45DA | 00:0A:61:1A:0D:D3 | 255.255.255.0 | 192.168.150.1 | 80 | Disabled | - |
| DWC-MB45DA | 192.168.150.71 | DWC-MB45DA | 00:0A:61:1A:0D:D1 | 255.255.255.0 | 192.168.150.1 | 80 | Disabled | 9.2.60 |
| DWC-MB45DA | 192.168.150.70 | DWC-MB45DA | 00:0A:61:1A:0D:D2 | 255.255.255.0 | 192.168.150.1 | 80 | Disabled | - |
| DWC-MB46AH | 192.168.150.99 | DWC-MB46AH | 00:0D:F1:20:7B:60 | 255.255.255.0 | 192.168.150.1 | 80 | Disabled | A2.01.02_2011 |
| DWC-MB45DA | 192.168.150.112 | DWC-MB45DA | 00:0D:F1:21:43:67 | 255.255.255.0 | 192.168.150.1 | 80 | Disabled | A2.01.02_2011 |

1. From the Windows based Blackjack[®] server or any Windows PC, open DW IP Finder™ by double click on the DW IP Finder icon  on the Desktop or click on DW IP Finder™ from Start Menu > All Programs > DW IP Finder™.

* Must be on the same subnet as DW Spectrum[®] IPVMS server.

2. If the DW IP Finder™ is not installed or not the latest version, download and install from

<http://digital-watchdog.com/support>.

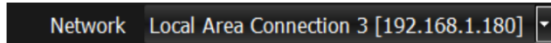
- Under software, select DW IP Finder™ from the drop down list.
- Then go to downloads section and expand software/firmware.
- Click on the download icon to download the DW IP Finder™.
- Then install the DW IP Finder™ by following the installation wizard.

* Requires DW IP Finder™ 4.3.17 or later version.

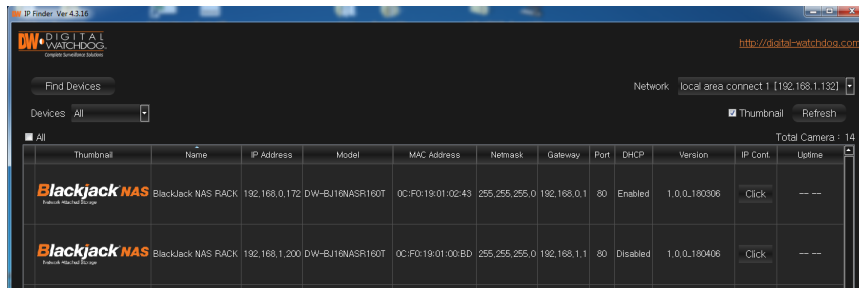
3. When the DW IP Finder™ is opened, it will scan and list all the DW cameras and Blackjack[®] NAS RACK that are on the selected network.

4. If the Blackjack[®] NAS RACK is not listed, change the network* by clicking the drop down and select another network if exist. Then click **Find Devices** to scan the network for the Blackjack[®] NAS RACK.

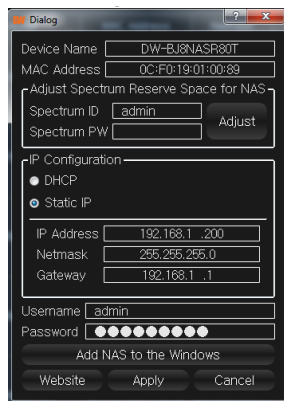
- If it's showing incorrect network, select the correct network from the drop down list.



5. Find the Blackjack[®] NAS RACK from the list, then either double click on the **Blackjack NAS** or click **Click** under the IP Conf column.



6. From the device setting dialog window, enter IP address, netmask and gateway then click Apply to save changes then close the dialog.



*Consult with your IT or network administrator If you do not have IP information.

NOTE: Default IP info

IP Address: 192.168.1.200

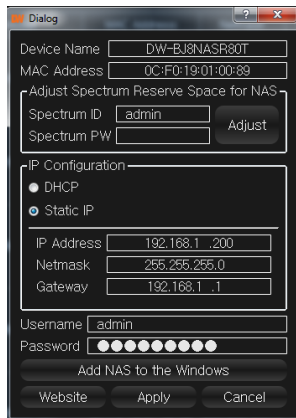
Subnetmask: 255.255.255.0

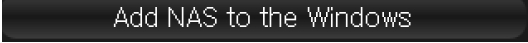
Gateway: 192.168.1.1

ADD STORAGE TO DW SPECTRUM[®] IPVMS MEDIA SERVER

For Windows


1. Once the new IP have been applied, click on Find Devices to update the changes.
2. Find the Blackjack[®] NAS RACK from the list, then either double click on the **Click** or click on the **Blackjack NAS** under the IP Conf column.
3. Open the Device Settings dialog to add storage to the Windows and to DW Spectrum[®] IPVMS media server.

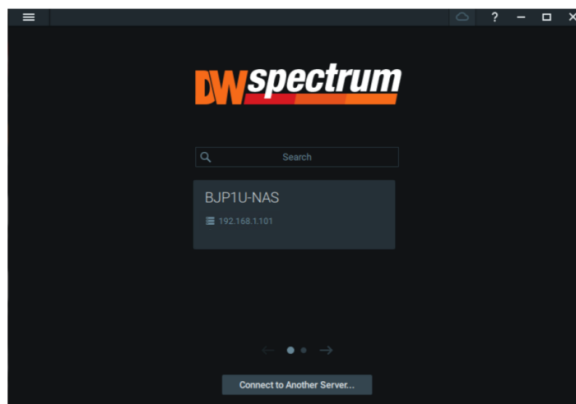


4. Click on the 
5. Script will run to add the NAS storage volumes to the Windows. Upon successful execution of the script, the following result will be displayed.

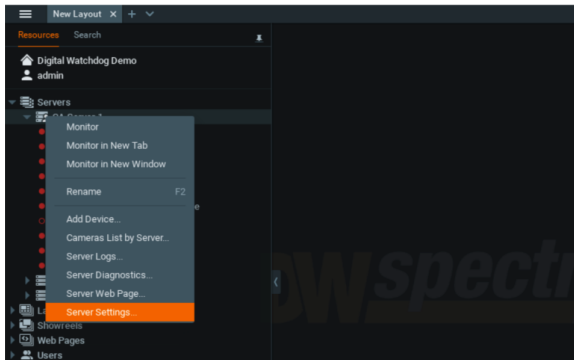
```


-----
RESULT <0>
-----
iSCSI Initiator Service : Success
IP Address : 192.168.1.200
Connection Success
[iSCSI Target]
Counts : 1 found
iqn.2015-10.com.DW:BJ8NASR16T:180306T073648 > Login Success
[Disk Format]
Disk 1 : Success
Disk 2 : Success
Press any keys to exit
    
```

6. Upon successful completion of the installation, "Success" for both DISK1 and DISK2, click on the black space then press any key on the keyboard to close the Window.
7. Close the Windows of the new volumes created by the script.
8. Close the Device Setting dialog box and minimize the DW IP Finder™.
9. Open DW Spectrum® IPVMS Client by double click the DW Spectrum® IPVMS icon  On the Desktop or click on DW Spectrum® IPVMS from Start > All Program > Digital Watchdog
10. Login to the DW Spectrum® IPVMS server where the Blackjack® NAS RACK is connected to.



11. Right click on the server name listed on the Resources then click Server Settings.

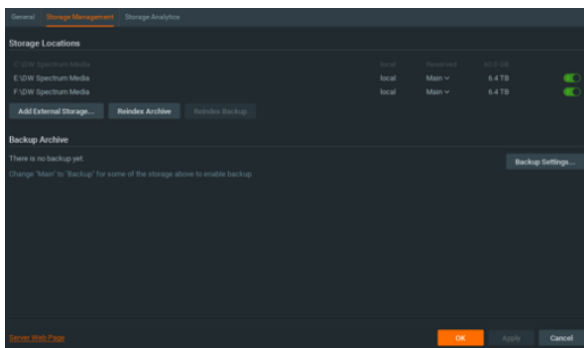


12. From the Storage Management tab, enable the recordings to the newly created volumes on the Blackjack[®] NAS RACK by clicking 

It will show green when enabled 

* if you have local drive turned on for recording, please contact Tech Support for options.

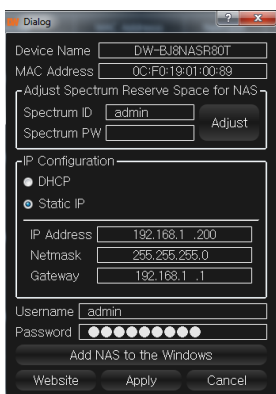
13. Select storage type as either Main or Backup. (Refer to the DW Spectrum[®] IPVMS manual for detail information of the storage type).



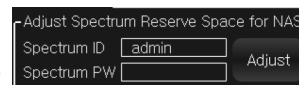
14. Click Apply or OK to save the changes.

ADJUST DW SPECTRUM[®] IPVMS RESERVE SPACE FOR BLACKJACK[®] NAS RACK

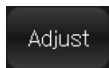
1. Restore the DW IP Finder[™] and open the Device Settings to adjust DW Spectrum[®] IPVMS reserve space for Blackjack[®] NAS RACK. (NAS should have 100GB reserve space per volumes).



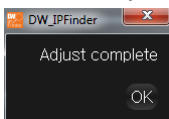
- Input the DW Spectrum's admin password in the DW Spectrum[®] IPVMS PW



- Click



- If the connected Blackjack[®] NAS RACK has set 100G space limit successfully, you can see the message

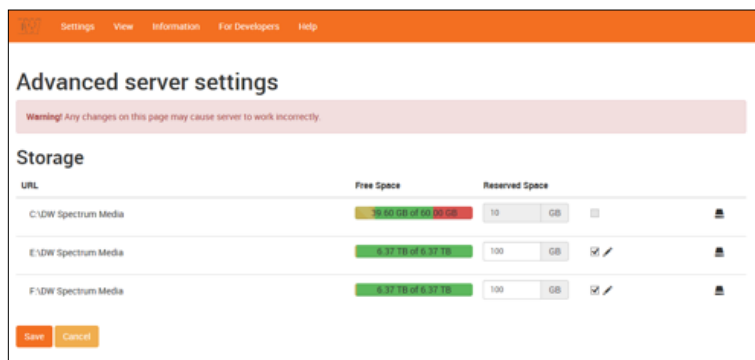


- Then click on the



* You can check the reserved space size from

<http://localhost:7001/static/index.html#/advanced>



- You can close the DW IP Finder[™] if not needed.

REQUIREMENTS

- Network : 1Gbps network.
- DW Spectrum[®] IPVMS Server : DW Spectrum[®] IPVMS 2.6 or later
- DW IP Finder[™] 4.3.17 or higher
- UPS system with 750VA or higher (for only connecting DW-BJ8NASRxT)
- Windows[®] 7 or later OS.

Tel: +1 (866) 446-3595
Fax: (813) 888-9262



www.digital-watchdog.com
sales@dwcc.tv