

Blackjack C2P

Servers Powered by DW Spectrum® IPVMS



Default login information for C2P

Username: admin	Password: Password1
-----------------	---------------------

WHAT'S IN THE BOX

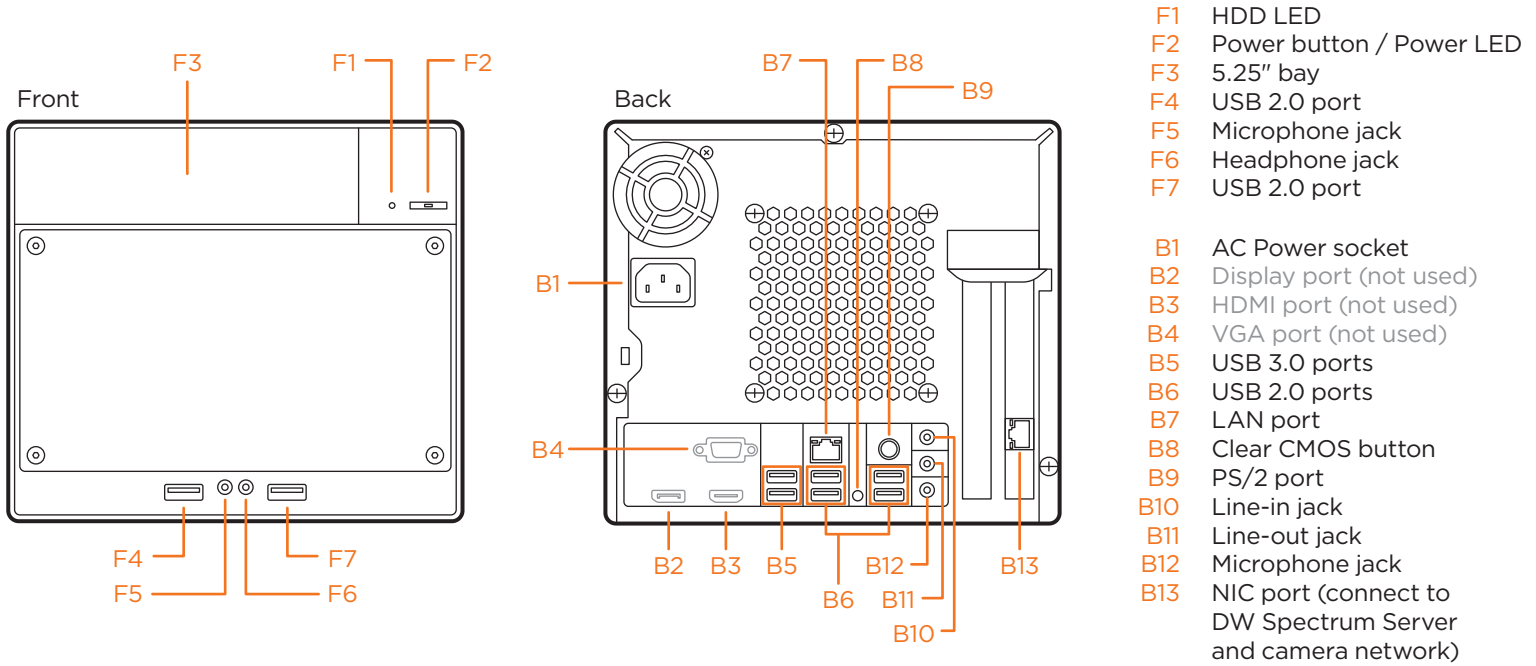
C2P server		1	Keyboard and mouse		1 set
Quick start guide		1	Power cable		1 set

NOTE: Download all you support materials and tools in one place.

1. Go to: <http://www.digital-watchdog.com/support-download/>.
2. Search your product by entering the part number in the '**Search by Product**' search bar. Results for applicable part numbers will populate automatically based on the part number you enter.
3. Click '**Search**'. All supported materials, including manuals, Quick start guides (QSG), software and firmware will appear in the results.

Attention: This document is intended to serve as a quick reference for initial setup.
See the DW Spectrum® IPVMS full manual for more information on features and functionality.

BLACKJACK® C2P HARDWARE



Default login information for pre-installed C2P

Username: admin	Password: Password1
------------------------	----------------------------

WARNING For an optimal system configuration, it is recommended that a UPS (Uninterrupted Power Supply) be used to power the setup. Dual monitors are not recommended due to CPU performance. To connect two monitors to the server, go to the display setup to activate the second monitor.

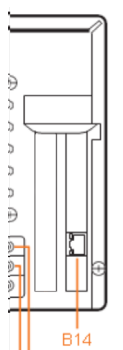
SPECIFICATIONS

Specifications		
Form factor		Desktop / Cube
Operating system		Windows®10
	OS on SSD	240GB SSD
CPU		Intel i7® processor
Memory		16GB
Ethernet port		2x gigabit ethernet ports (RJ45)
Storage	Maximum SSD and HDD	1 x SSD + 2 x SATA HDD
Video-out	Outputs	1x VGA, 1x true HD, 1x DP outputs (support for dual display)
	Video card	Onboard Intel HD Graphics
	Resolution	Max 4096 x 2160
Pre-loaded software		C2P, DW Spectrum® IPVMS client
Keyboard & mouse		Included
Power supply		300W**
Operating temperature and humidity		41°F-104°F (5°C-40°C)
Operating humidity		20-90% RH
Dimension (WxDxH)		8.5" x 12.8" x 7.5" (215.9 x 325.1 x 190.5 mm)
Warranty		5 year limited

SETTING UP THE SERVER

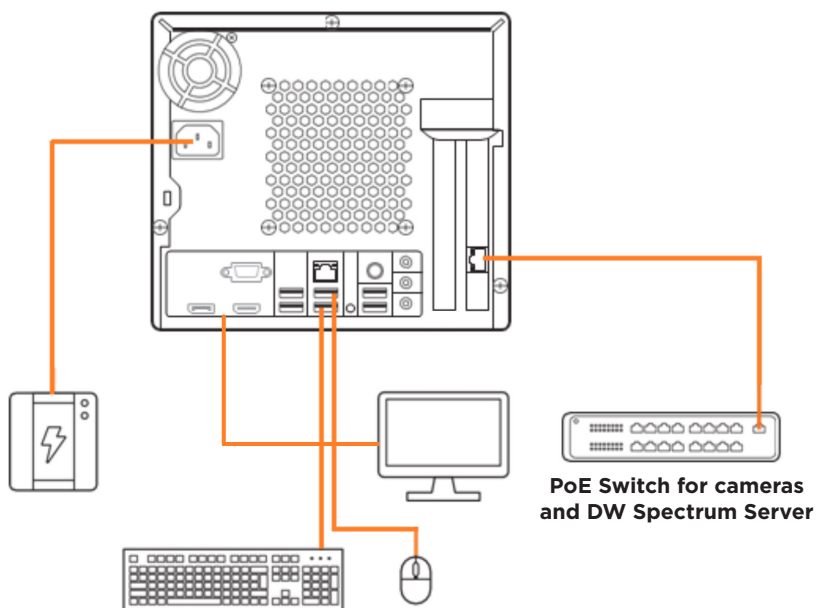
STEP 1: Connect external devices, power and network.

1. Connect a monitor, USB keyboard, USB mouse and network cable to one of the Ethernet ports (B14 on the diagram). Configure the camera's network first, then configure the server's local network.



2. Connect the server to an appropriate power source. It is recommended to use a 750VA or higher UPS system.
3. Power up the server if the server does not turn on automatically by pressing the power button on the front of the server. (F2 on the diagram).

* Connecting the power cable to the live power source may turn on the server automatically.



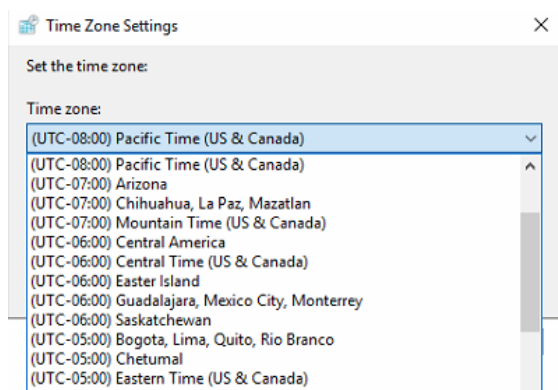
STEP 2: Configure date and time

1. Double-click on the date and time icon on the desktop.
2. Change time zone if it is not correct



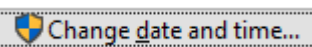
Change time zone...

(default is UTC-08:00 Pacific Time).

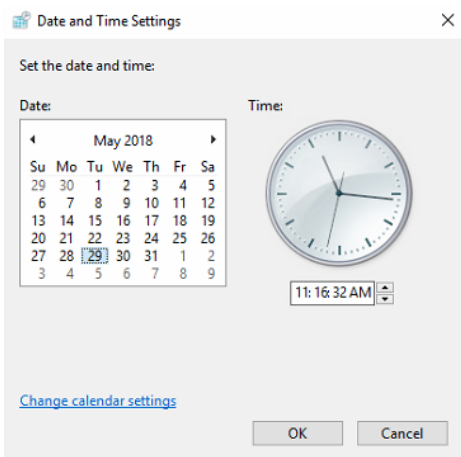


Press OK after selecting the correct time zone.

Click "Change date and time..." to update the date and time if they are not correct.



* Verify the time zone before updating the date and time. Time may show 2 or 3 hours off due to an incorrect time zone.



Press OK after adjusting to the correct date and/or time.

4. Press OK to close the date and time when done.

STEP 3: Configure network

Please have the following information ready before starting the network configuration.

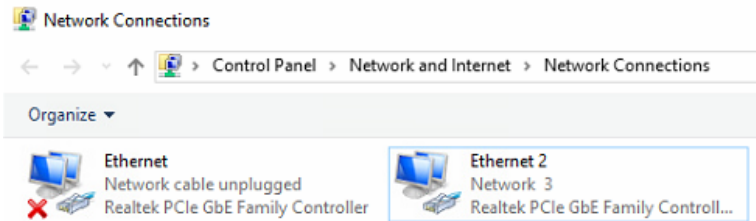
	Camera network	Local network (LAN)
IP address		
Subnet mask / Netmask		
Default gateway / Gateway	Not applicable	
DNS servers	Not applicable	

* Camera network and local network cannot be on the same network.

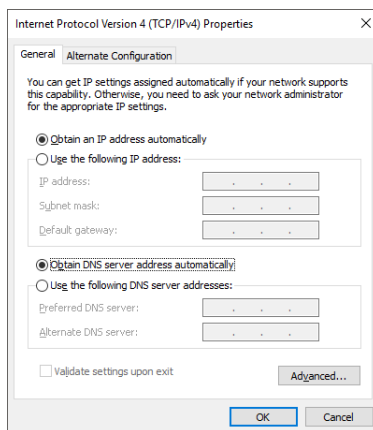
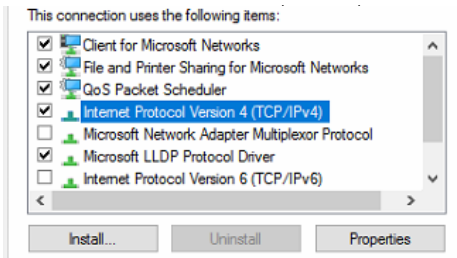
NOTE The Blackjack® server's network settings are set to DHCP as default.

NOTE If you are not sure what information to enter, contact your Network Administrator or Internet Service Provider for the information.

1. Double click on the “Network Connections” on the desktop.
2. Right-click on the Ethernet with the cable connected and click “Properties”.

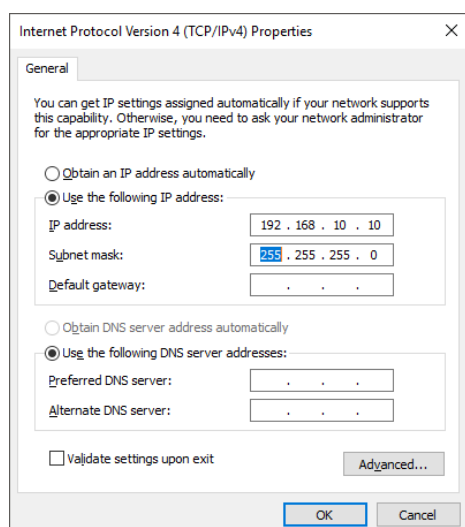


3. Select “Internet Protocol Version 4 (TCP/IPv4)” and click “Properties”.



4. Select “Use the following IP address” (Use the following DNS server addresses will be selected automatically).
5. Enter the IP address and subnet mask of the camera network. (Do not enter anything for the default gateway, preferred DNS server and alternate DNS server).

NOTE It must be the same network as the cameras and must not be the same network as the local network. Contact your network administrator for more information.

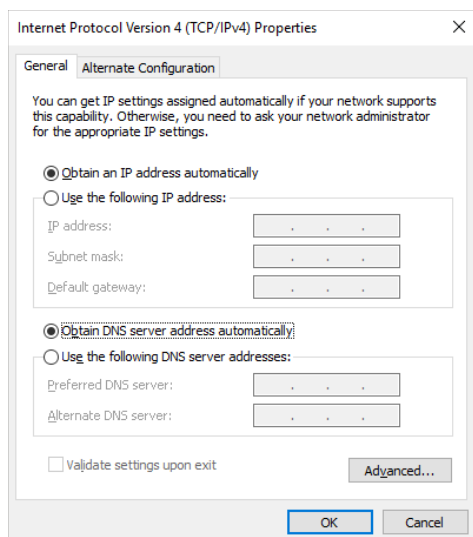
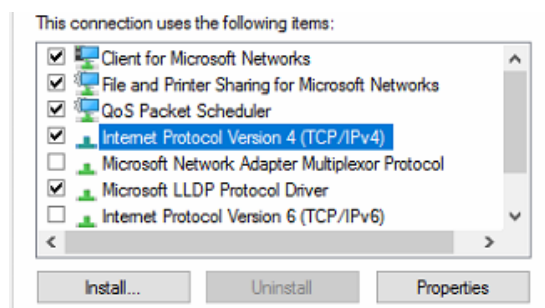


6. Click OK to close then click close to go back to network connections.

Local Network

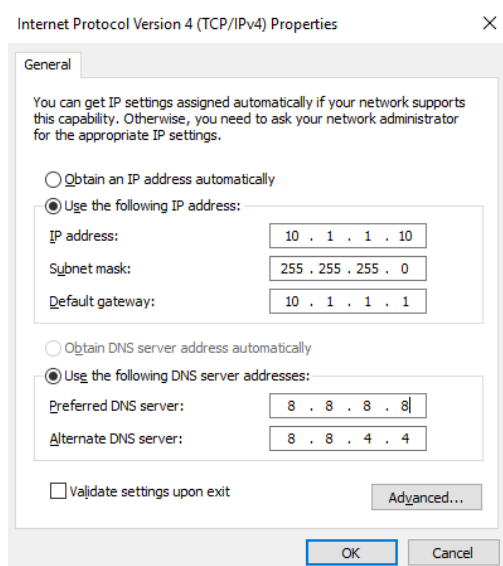
7. Right-click on the other Ethernet, the one with network cable unplugged, and click “Properties”.

8. Select “Internet Protocol Version 4 (TCP/IPv4)” and click “Properties”.

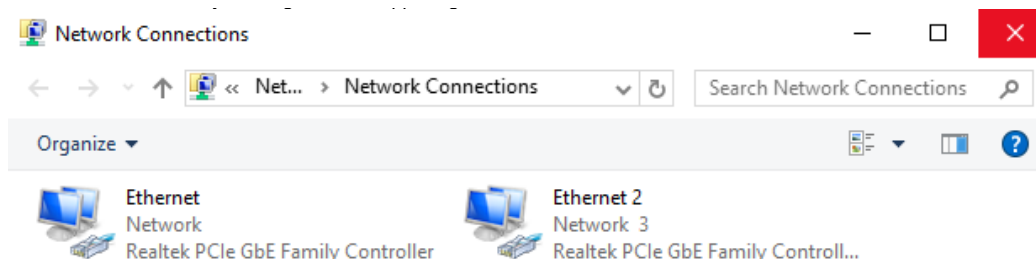


9. Select “Use the following IP address” (Use the following DNS server addresses will be selected automatically).

10. Enter the IP address and subnet mask of the camera network or DW Spectrum server network.



11. Click OK to close then click close to go back to network connections.
12. Connect a network cable to the Ethernet port B7 on the diagram (page 2) to the switch on the local network.
13. Close the Network Connections dialog.



NOTE If you are not connecting to the Blackjack® from within the same network, you may be required to perform port forwarding on your router to access the server. Contact your Network Administrator or Installer for additional information