



Quick Start Guide

VMAX480

Digital Video Recorder



Please note that the Accessory Kit and Shipping Box contain the following items :

| Items | Photo | Quantity | Items | Photo | Quantity |
|--|-------|----------------|------------------------------|-------|---------------------|
| User Manual (DVR & Software) | | 1 Set 1 Set | I2V DC Adaptor & Power Cable | | 1 Set 1 Set |
| CD (Manual & Software) & Quick Start Guide | | 1 Set 1 Set | Rubber Mount | | 1 Set (4 Pieces) |
| IR remote Control | | 1 Set | USB Mouse | | 1 Set |

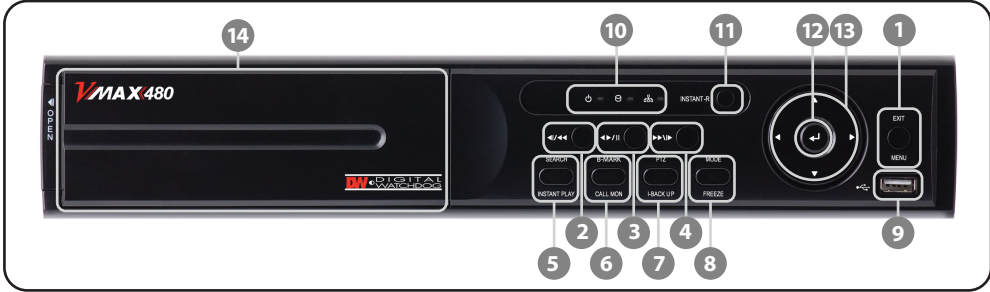
Administrator LogIn : Admin and the password box is blank.

ATTENTION PLEASE !!!

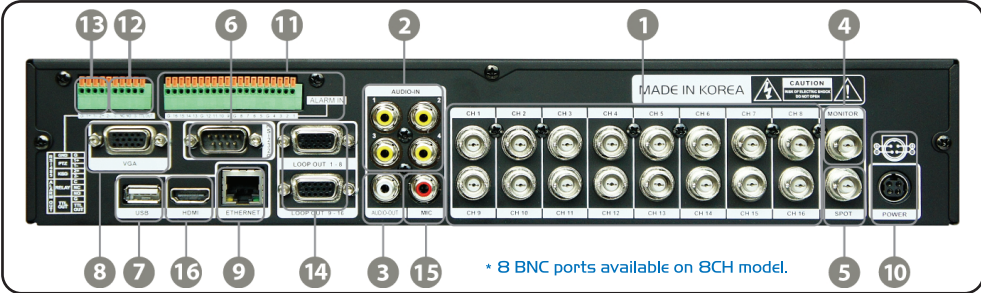
This document is a Quick Start Guide.
Please refer to the user manual for more detail information.

Front/Rear Panel

DW 8 & 16 Channel Case: 11.80" W x 2.16" H x 12.46" D



| No. | Buttons | Functions |
|-----|--------------------------------------|--|
| 1 | Menu / Exit Button | Toggles On or Off Menu Setup Display |
| 2 | Fast Reverse Playback Button | Fast rewind during playback |
| 3 | Forward & Backward Play Pause Button | Forward play & Backward Play (Long Press) Pause (Short Press) |
| 4 | Fast Forward Button | Fast forward during playback |
| 5 | Search Instant Play(Press and hold) | Go to search mode / Used to initiate Instant Reverse Playback |
| 6 | Book-Mark Call Mon(Press and hold) | Book-Mark / Used to display full screen video of all installed cameras in sequence by spot out |
| 7 | PTZ I-backup(Press and hold) | Bring up PTZ Camera control / Used to initiate instant back up |
| 8 | Mode Freeze(Press and hold) | Change screen mode / Used to initiate Freeze function |
| 9 | USB Port | USB port(Ver.2.0)for mouse operation or backup or F/W update |
| 10 | LED Indicator | Indicates system status Power, Record, HDD and Remote Controller |
| 11 | Instant Record Button | Emergency Recording |
| 12 | Enter Button | Select value or setting |
| 13 | Direction Button | Move to the direction that user wants to select |
| 14 | DVD±RW | DVD±RW door |

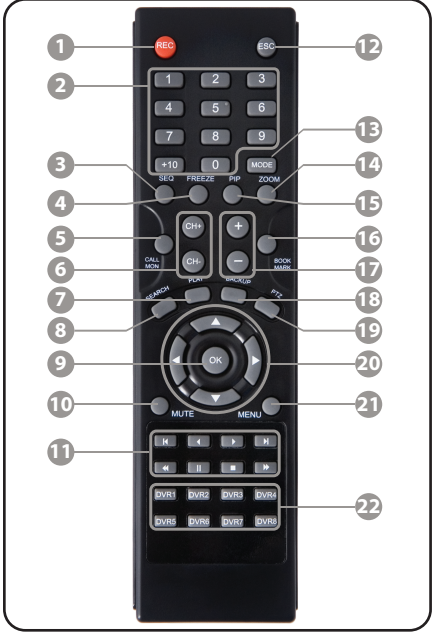


| No. | Name | Description |
|-----|--------------|---|
| 1 | Video-In | Camera inputs (Supports NTSC/PAL) |
| 2 | Audio-In | Audio input device (with amplifier) |
| 3 | Audio-Out | Audio output device (with amplifier) |
| 4 | Video-Out | Composite Monitor |
| 5 | Spot-Out | Composite Spot Monitor |
| 6 | RS-232 Port | RS-232 input device |
| 7 | USB Port | USB port (Ver2.0) for mouse operation, backup, or F/W update. |
| 8 | VGA Port | VGA Monitor |
| 9 | LAN Port | 10/100 Ethernet connection terminal |
| 10 | Power Input | Power supply connection (Default : 12 V, 3.33A/6.67A) |
| 11 | Sensor Input | Sensor input |
| 12 | Alarm Output | Alarm output |
| 13 | RS-485 Port | PTZ camera or external keyboard |
| 14 | Loop Out | Loop Out Port |
| 15 | MIC-In | MIC input device |
| 16 | HDMI Port | HDMI Output |

Quick Start Guide

DW IR Remote Control

| No. | Functions |
|-----|---|
| 1 | Start Instant Emergency Record |
| 2 | Numeric Button |
| 3 | Auto-Sequence Button on Live Display Mode |
| 4 | Freeze button |
| 5 | Call Monitor button |
| 6 | Numeric Button |
| 7 | Instant (Emergency) Playback Button |
| 8 | Search Button |
| 9 | OK (Select) Button |
| 10 | Audio Mute Button |
| 11 | Playback Button on Search Mode (Fast Backward/Playback/Stop/Fast Forward) |
| 12 | Exit Button |
| 13 | Display Mode Button |
| 14 | Zoom button |
| 15 | PIP Mode button |
| 16 | BookMark Button |
| 17 | Zoom In & out Button |
| 18 | Backup Button |
| 19 | PTZ Button |
| 20 | Direction Button (Up/Down/Right/Left) |
| 21 | Menu Button |
| 22 | ID Select Button |



Initial Setup

When the cameras and monitors are connected to the DVR, please refer to the quick start guide to configure the setup menu.

DVR Installation

1. Make sure the cameras and the monitors are properly connected to the DVR.
2. The DVR should be placed in a dust and moisture free environment. It must never be exposed to direct sun light. Server room temperature is highly recommended to reduce the chance of overheating. Overheating may cause the DVR to become unstable.
3. During the boot process, the DVR should not be interrupted. Do not press any buttons on the front keypad, mouse, or remote controller. Do not unplug the power adapter or turn the DVR off during the boot process. A UPS (Uninterruptable Power Supply) is highly recommended to prevent malfunctioning of the DVR during a power outage.

First initial Boot-Up

To access the Setup Menu, press the [Menu] button on the front key pad, or right click the mouse button. The default login information for the administrator account is:
User ID : admin
Password : Password box is blank

Main System Menu

The main system menu is configured by using its Graphical User Interface (GUI). The GUI is comprised of six (6) major sub menu groups accessed by clicking the corresponding icons: System, Device, Record, Network, Backup, and Quick Setup. These menus and submenus are selectable via USB mouse, front panel of the DVR, or the remote controller.

Navigation

Use the supplied USB mouse for easy operation. Alternatively, use the following frontal key pad or remote controller key pad.
- Use the [Enter] button click the highlighted selection.
- Use the directional arrows to navigate the menu setup.
- Use [Menu] button to enter and exit the menu or a window.

Quick Start Guide

Date and Time Setup

1. Go to the SYSTEM INFO tab in System Menu.
2. Select appropriate display format from the [DATE/TIME FORMAT] drop down list.
3. Select appropriate year, month, date, hour, minute and second in the [DATE/TIME SETUP] section.
4. Select appropriate time zone from the [TIME ZONE] drop down list.

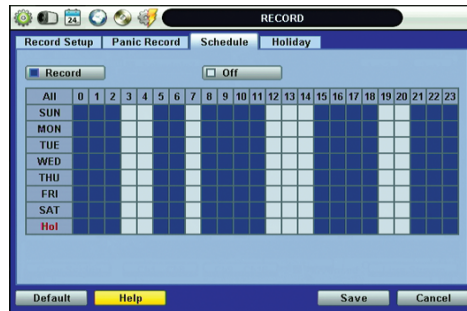
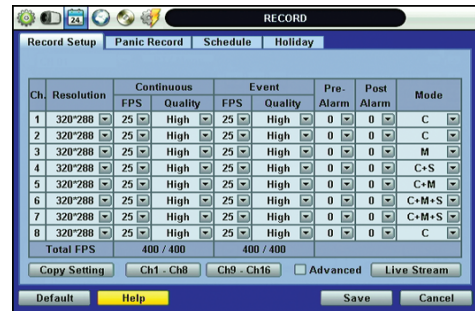
Hard Disk Drive Clear

When adjusting the time and data for the first time make sure to clear Hard Disk Drive.

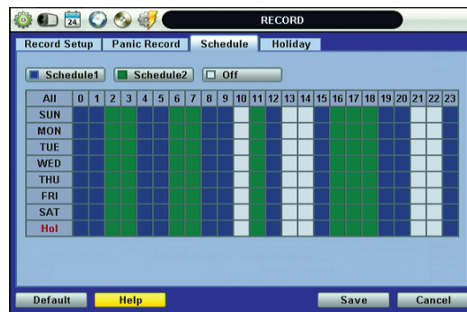
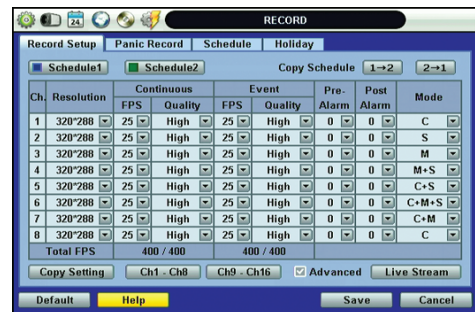
1. Go to HDD tab in System Menu.
2. Click on the [HDD Clear] button.
3. Exit Out of the main menu and reboot.

Record Configuration

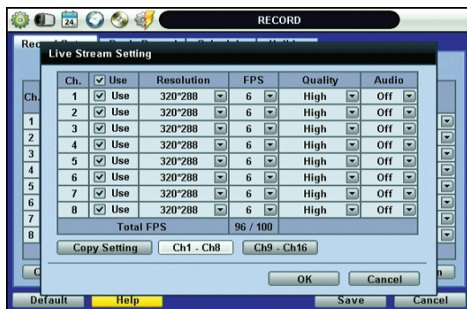
1. Locate RECORD icon from the main menu and select it.
2. Select RECORD SETUP.
3. Choose the desired resolution, frame rate, quality, and recording type in the drop down list. Individually configure the settings for each channel, or use the [COPY SETTINGS] button to apply the same configurations to multiple cameras.
4. Select SCHEDULE tab to setup the record schedule.



5. For a more detailed record setup, mark the checkbox for [ADVANCED] in the RECORD SETUP tab.
6. When [ADVANCED] is marked, you can setup two record schedules: [Schedule 1] and [Schedule 2].
7. Go to SCHEDULE tab to setup [Schedule 1] and [Schedule 2].



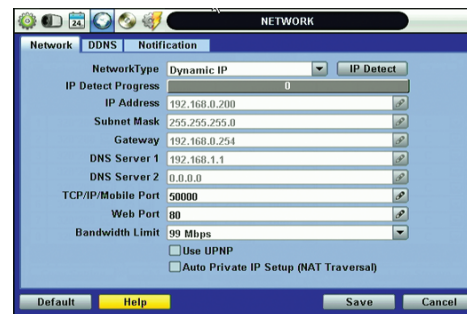
8. You can configure the Live Stream (Resolution/FPS/Quality) setting independently by clicking the [LIVE STREAM] button in RECORD SETUP tab.



Network Setup (Server, ACS & Web)

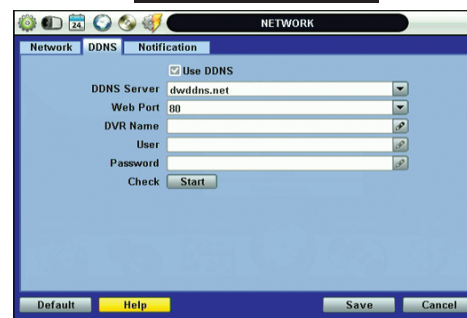
Network Setup

Press [Menu] button on the front panel of the DVR or the IR remote controller to access the Menu Setup. Select [Network] to configure remote access.



1. In the NETWORK tab, set Network Type to [Dynamic IP] and click [IP DETECT].
2. Change the [Network Type] to [Static IP], if the DVR is assigned to a new IP address from the DHCP server.
3. Check the DHCP settings of you router and set the DVR IP address outside of the DHCP range.
4. If the [DNS SERVER] IP address is using an internal IP (Example: 192.168.0.2 or 10.10.10.2), DDNS, information registration might be blocked, due to Router setting error or network security reasons in DHCP setting. Therefore, use a public DNS: (168.126.63.1 / 168.126.62.2 / 164.124.101.2)
5. Click [SAVE].

Registering DDNS



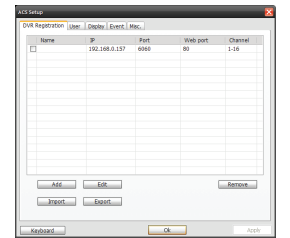
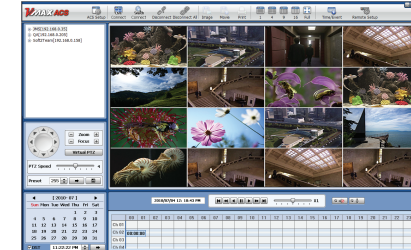
Check [USE DDNS] box.
Select [dwddns.net] for the DDNS Server. (Recommended)
Enter the DVR name and click [START] button to check.
Click [SAVE] after "DDNS Success" appears on the screen.
To use "dyndns.com," go to <http://dyndns.org> and create an account.

Quick Setup & Help

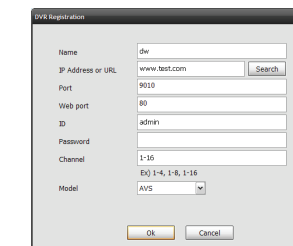
ACS(Advanced Client Software)

DVR Site Registration

- Click [ACS SETUP] button and go to DVR REGISTRATION tab.



- Click [ADD] to add a site. Click [EDIT] to edit an existing site information.
Click [REMOVE] to delete a site.



Default Port # : 9010

Default Login for the ACS : administrator and password box is blank.
Default Login to a remote DVR : admin and password box is blank.

For DDNS connection,
you must input the URL in the following format:
[DVR Name].[DDNS Link]
e.g.digitalwatchdog.dwddns.net

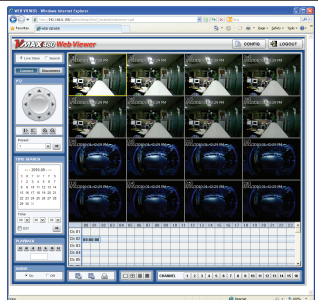
Web

Default Port # : 80

Default Login to a remote DVR : admin and password box is blank.

Please enter the IP address in the address bar when using Internet Explorer.

The user has to download Active-X Control from the DVR and install it on the Client Workstation/PC before monitoring live video.

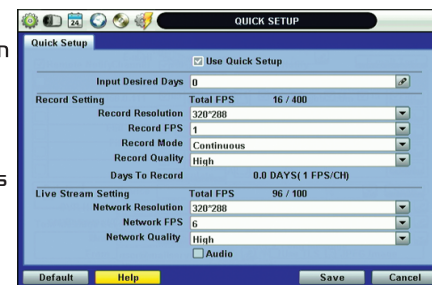


Quick Setup

Quick Setup helps the user make simple configuration for recording resolution, recording speed by frame, recording mode, and recording periods.

The system will prioritize the Quick Setup configurations and will follow the settings regardless of the configurations set in other menus.

Users should not mark the [USE QUICK SETUP] checkbox, if he/she wants to utilize full system configuration defined in the other menus.



Note : Quick setup must be de-activated if the user requires configuration from the other menus.
After the user marks [USE QUICK SETUP] checkbox to define settings, the system will ignore all other configurations set in other menus.

Help

Note : The [HELP] button will help you understand how to setup several important settings such as DDNS, NOTIFICATION, BACKUP, SCHEDULE, NETWORK, and CAMERA without the user's manual book. For example, if you need help on how to set BACKUP, click [HELP] button at the right bottom of the BACKUP menu.

