

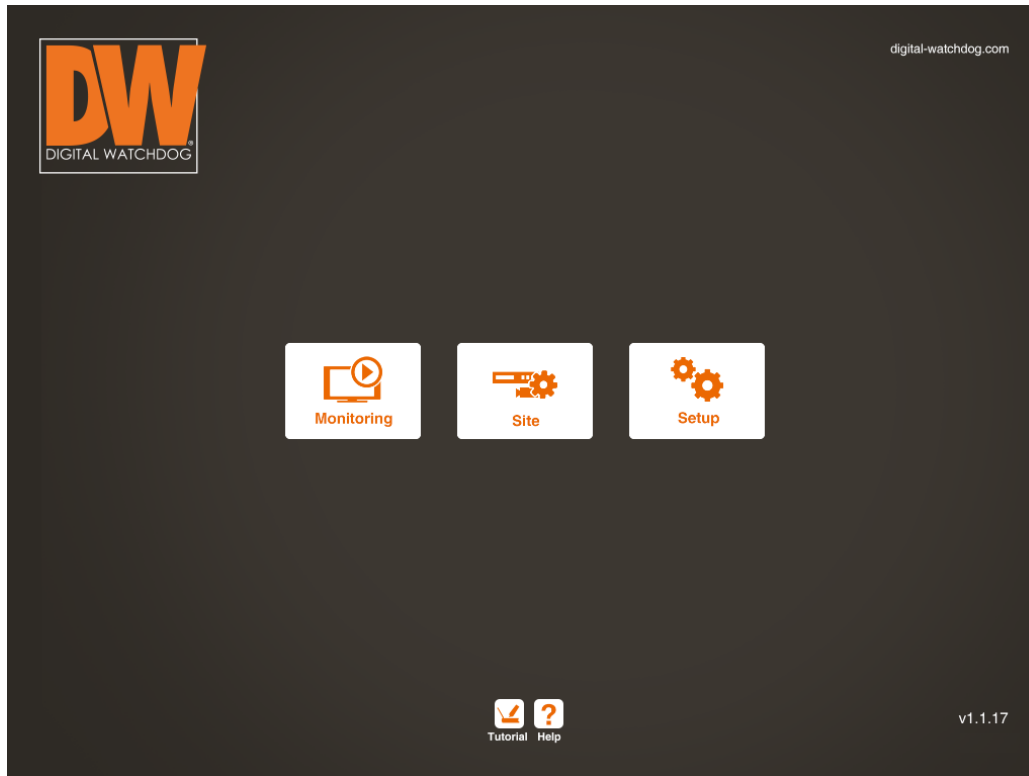


Thank you for choosing Digital Watchdog's Mobile Client. This app allows you to view and monitor your entire surveillance solutions, including both analog and IP complete DW solutions. Control, view live and playback, audio and geographical location all from the same user-friendly app.



Help Menu for DW Client App

Mobile App Configuration – Option Menu	3
Welcome Registration Page	3
Account Management	3
Screen Lock	3
Auto Connect	3
Auto Screen Mode	3
Device Configuration Menu	4
Adding a Device	4
Editing a Device	4
Deleting a Device	4
Supported Devices	5
Monitoring Center	5
Main View	5
Menu Bar	5
Quick	5
Search/ Live	7
Split	7
Menu	8
Help	9
Sites List	9
Favorites	9
Viewing and Monitoring	10
View a Single Site	10
View All Sites.	10
View Individual Cameras from Multiple Sites.	10
Controlling the Monitoring View	10
Pinch-to-zoom	10
Re-Arrange Display Order	10
Move Layout Up and Down	10
Instant Search	11
Camera's Information	12
Search/ Playback View	12



MOBILE APP CONFIGURATION

Welcome Registration Page

When you login to the app for the first time, you will be prompted to register a username and password for the app. This is the username and password you will use to access the app. You can also skip this and setup your username and password later by accessing the Setup menu and selecting 'Account Management'.

To setup your username and password, enter:

- Name
- E-mail
- User ID
- Password
- Re-type password
- You can also select to be included in e-mail notifications for new firmware, products, special promotions and more.

Account Management

To edit any information entered in the welcome registration page, access the Account management screen under the setup option. Here you can modify your username and password, contact e-mail, and select to be included in e-mail notifications for new firmware, products, special promotions and more.

Screen Lock

Auto Connect

If enabled, the app will automatically connect to the last site running when launched.

Auto Screen Mode

If selected, when viewing a site, the app's main display will automatically display a screen split matching the number of cameras associated with the site. For example, a site with 8 cameras will automatically open an eight (8) split screen view.

SITES CONFIGURATION MENU

Adding a Site

If you are adding the first site to your list, enter the site's information in the screen. If you are adding consecutive sites to the app, press the 'New' button to add a new site.

Name: Enter a name associated with the site

URL / IP Address: Enter the site's IP or DDNS address (if you are connecting to the site publicly, you may have to open ports on your router. Contact your Network Administrator for more information).

Network Port: Enter the proper ports to connect to your site. Any server running DW Spectrum IPVMS has a default port of 7001.

User ID and Password: Enter the device's User ID and Password

Location Address: The app is powered by Google Maps, allowing it to track and display the location of all your devices. To do so, please enter the full address associated with the device.

When all the information has been entered properly, press 'Save' to add the site to the Site List.

Editing a Device

To edit an existing site from the Sites List, select the site by tapping the name on the Site List. The site's information will be displayed on the screen. Modify the information as needed and select 'Save'.

Deleting a Device

To delete a site from the Site List, select one of the following options:

- Tap on a site from the Site List. Press the 'Delete' button.
- Slide your finger to the left over the site on the Site List you want to delete. The red Delete button will appear next to the site's name. Press to delete, or slide the site name back to the right to cancel.

Supported Devices

Below is a list of all devices supported by Digital Watchdog's App:

- All NVR Servers Powered by DW Spectrum™ IPVMS
- VMAX960H (Via DW Spectrum™ Integration)
- VMAX960H Flex (Via DW Spectrum™ Integration)
- VMAX960H CORE (Via DW Spectrum™ Integration)
- VMAX480 (Via DW Spectrum™ Integration)
- VMAX Flex (Via DW Spectrum™ Integration)
- MEGApix® IP Cameras (Via DW Spectrum™ Integration)
- MEGApix Pano™ IP Cameras (Via DW Spectrum™ Integration)
- MEGApix CaaS™ IP Cameras (Via DW Spectrum™ Integration)

Digital Watchdog's Demo Sites

Digital Watchdog has a full list of demo sites for you to use when evaluating the app. Please use the information below to add and connect to any of Digital Watchdog's free and public demo sites:



Demo 1:
IP Address: 216.3.111.35
Network Port: 7001
Username/ Password: demo/ demo

Demo 5:
IP Address: 99.59.124.233
Network Port: 7001
Username/ Password: demo/ demo

Demo 4:
IP Address: 173.12.39.30
Network Port: 7001
Username/ Password: demo/ demo

Demo 3:
IP Address: 72.18.16.27
Network Port: 7001
Username/ Password: demo/ demo

Demo 2:
IP Address: 216.3.111.36
Network Port: 7001
Username/ Password: demo/ demo

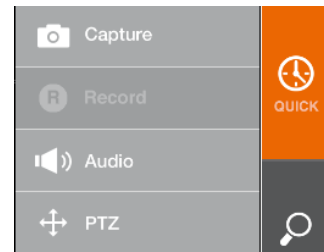
MONITORING CENTER

Main View

The screenshot shows the DW Mobile Monitoring Center interface. On the left, a 'Sites List' menu is open, showing a list of sites including 'Tampa Site', 'Cerritos Building', 'Demo', and 'Demo 2'. The main viewing area displays a large live video feed of a parking lot with the title 'BLDG6-DWC-PB2M4TIR' and timestamp '2014/12/09 07:34:38'. Below this, there are smaller video feeds for 'Demo 2' and 'Demo 3'. On the right, a 'View all favorites' menu is open, showing a list of favorites including 'View 1 (Live) 8 Screen'. The bottom of the screen features a 'Menu Bar' with options: 'ADD', 'EDIT', 'HOME', 'QUICK', 'SEARCH', 'SPLIT', 'MENU', and 'HELP'. Annotations with arrows point to various parts of the interface: 'View all Sites Simultaneously' points to the top left; 'View all Favorites Simultaneously' points to the top right; 'Home' points to the HOME icon; 'Favorites List' points to the list of favorites; 'Quick Actions' points to the QUICK icon; 'Search/ Live Switch' points to the SEARCH icon; 'Split View The Menu Options' points to the SPLIT icon; 'Menu Options' points to the MENU icon; 'Add/ Edit Sites' points to the ADD and EDIT buttons; and 'Help Menu' points to the HELP icon.

Menu Bar

The Menu Bar includes access to all the main functions, features and display options you will need while in the monitoring center. The Menu bar includes six buttons that offer additional features, view modes, transition between live and playback video, and more.



Quick

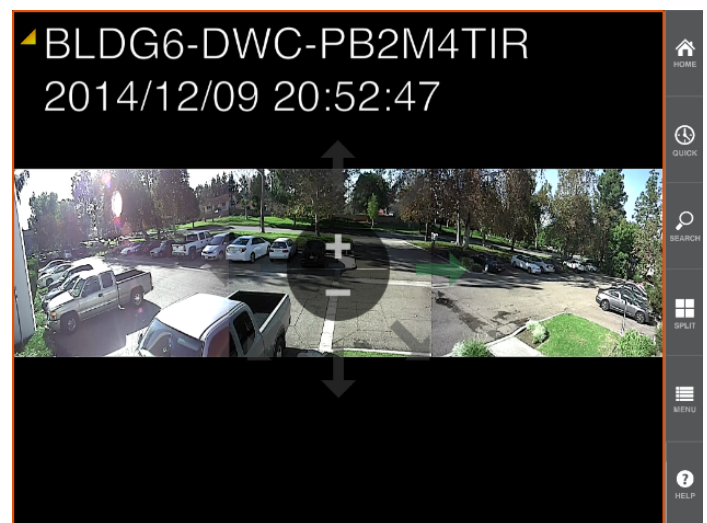
The quick menu option includes some of the more popular features of the app, all conveniently located under a single place for easy and quick access.

- **Capture** – click on the capture button to instantly save a JPEG image from the selected channel. When an image is captured, the iOS sharing center will automatically appear, allowing you to share captured images of events instantly with all necessary parties. If you chose to export the image and e-mail it, the e-mail with the image attached will include the image's camera name and date and time for your records.



- **Record (Available in DW Mobile Pro[™])** – select a single channel and export an avi file for your records. Press the 'Record' button to start recording. Press the button again to end the recording. The popup sharing options will appear. Select to mail the file, share it on Facebook or YouTube, or save it locally.
- **Audio** – when enabled, you can hear audio from the selected camera. This feature is available only on supported cameras set and configured to receive and stream audio. Consult your device's manual for additional information on proper configuration.
- **PTZ** – when enabled, you can control any Pan Tilt Zoom camera connected to your devices. When enabled, an eight-directional virtual controller will appear on the screen. Press and hold the arrow in the direction you want to move the camera. You may zoom in and out of the camera's view as well, on supported devices.

This feature is available only on supported Pan Tilt Zoom cameras set and configured to be controlled via their device. Consult your device's manual for additional information on proper configuration.





Search/ Live

To view a selected channel in playback or search mode:

1. Press the 'Search/ Live' button.
2. You can also tap and hold on the channel for five seconds. This will pop up the instant search options window. Select the instant playback option to playback video for the selected channel from:
 - 1 minute ago
 - 10 minutes ago
 - 30 minutes ago
 - 1 hour ago
 - View first data available for the channel
 - Select Date/ Time to open the manual calendar search
3. To return to live mode, press the 'Search/ Live' button again.
4. To learn more about the playback mode and controllers tap [HERE](#).

Split

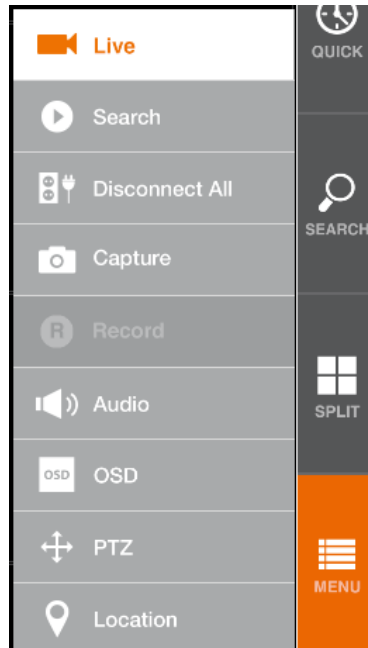
Viewing Options – Select the display option from the available options. Select from single channel, 4, 6, 7, 8, 9, 10, or 16 channel views. These views are dynamic and can be scrolled down to view more channels. For example, you can select the 6-channel split mode for channels 1-6. When scrolling down, the next 6-channel split mode will appear, displaying channels 7-12.

Simultaneous Live and Search View – you can monitor a channel in live while reviewing playback video at the same time. To do so:

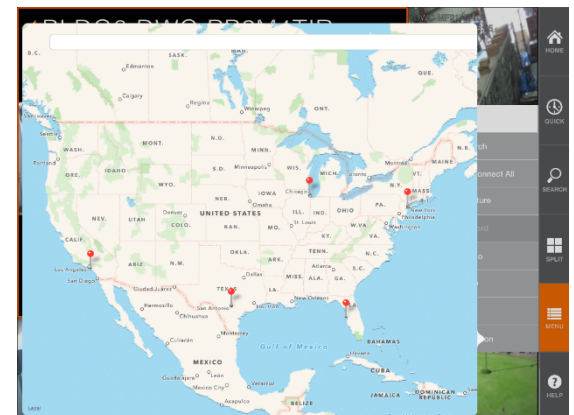
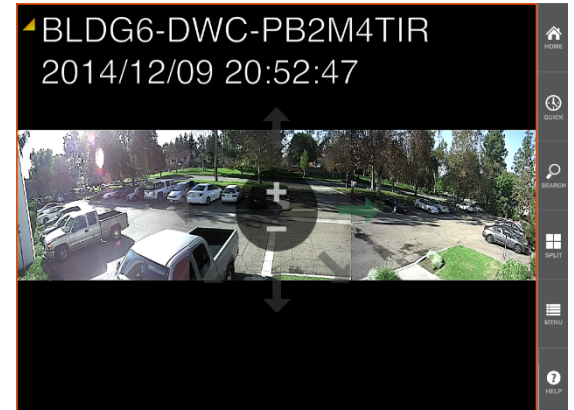
1. Select a single channel
2. From the split view options, select L/S view.
3. The screen will display live video from the selected channel on the top view, and playback video and playback controls on the lower view.
4. To exit the simultaneous Live and Search view, press the L/S button in the split view options.

Menu

- **Live** – If the button is highlighted, this indicates that you are currently viewing live video. Press to return from playback mode to the last live layout you were monitoring.
- **Search** – If the button is highlighted, this indicates that you are currently viewing playback video. Press to go to search mode for the selected single channel.
- **Disconnect All** – close all currently open connections and clear the viewing area.
- **Capture** – click on the capture button to instantly save a JPEG image from the selected channel. When an image is captured, the iOS sharing center will automatically appear, allowing you to share captured images of events instantly with all necessary parties. If you chose to export the image and e-mail it, the e-mail with the image attached will include the image's camera name and date and time for your records.



- **Record (Available in DW Mobile Plus™)** – select a single channel and export an avi file for your records
- **Audio** – when enabled, you can hear audio from the selected camera. This feature is available only on supported cameras set and configured to receive and stream audio. Consult your device's manual for additional information on proper configuration.
- **OSD** – Select to show or hide the camera's name, date and time.
- **PTZ** – when enabled, you can control any Pan Tilt Zoom camera connected to your devices. When enabled, an eight-directional virtual controller will appear on the screen. Press and hold the arrow in the direction you want to move the camera. You may zoom in and out of the camera's view as well, on supported devices. This feature is available only on supported Pan Tilt Zoom cameras set and configured to be controlled via their device. Consult your device's manual for additional information on proper configuration.
- **Location** – Digital Watchdog's remote client application is powered by Google Maps, allowing you to trace the location of your sites from the app. In order to use this feature, an address for the site's location must be added under the Device Configuration Menu. Tap here for more information. If you have multiple sites in your view, all locations will be displayed on the map. Tap on the red location marker on the map to view the site's name.



Help

Enter the help button to access useful information on the go on how to use the DW Client app and get the most out of your app experience. This interactive help menu includes setup instructions, recommended connection information for Digital Watchdog's devices, login information to public and free Digital Watchdog demo sites, features and access to the welcome tutorial.

Sites List

The Site List on the left-hand side of the screen displays all sites that were added under the Device configuration page. Here you can connect to individual sites, select specific cameras from each site to view simultaneously, or connect and monitor all sites on the list at the same time.

To show the Site List Panel:

1. Press the arrow on the left side of the screen, or
2. Drag the left side of the screen to the right to show the panel.

To hide the Site List Panel:

1. Press the arrow on the right side of the panel, or
2. Drag the Site List panel to the left to hide it.

Favorites

The Favorites List on the right-hand To show the Favorites List Panel:

1. Tap and hold the site's name on the site list.
2. Drag the name to the display area.
3. If 'Auto Screen Mode' is enabled, the display area will automatically change to display all channels associated with the site.
4. If the site has more than 16 cameras, you can view all of them by scrolling down the display area. To do so, while holding your finger to the tablet, drag your finger up to scroll down. Drag your finger down to scroll back up.

View All Sites

To view all sites on your site list:

1. Tap and hold the 'All Site' button at the top of the site list.
2. The button will turn yellow to indicate the view mode and the display area will show all sites according to their order on the Site List.
3. Each column on the display area represents a different site.
4. All cameras associated with the site will be under that same column. To view them, scroll up and down on the display area ([click here for more information](#)).
5. If you have a large number of sites, you can view all of them by sliding the viewing area to the right. This will show the next site's column of cameras.

• View Individual Cameras from Multiple Sites

To select individual cameras from a site to monitor, tap on the site's name in the Site List. All cameras connected to the site will be displayed. To view a single camera from the list:

1. Tap and hold on the camera's name
2. Drag the camera's name to the viewing area.
3. The camera's view will be displayed in the monitoring area.

Controlling the Monitoring View

• Pinch-to-zoom

Using your thumb and index finger, you can digitally zoom in and out of a camera's view. Digital zoom is available in live and playback, in both full channel and multi-channel viewing modes. To do so:

1. Select a camera. You can remain in multi-channel split mode, or select to view the camera in single, full channel mode.
2. To zoom in: place your index finger and thumb on the screen, and drag them away from each other in a widening motion.
3. To zoom out: place your index finger and thumb on the screen, and drag them towards from each other in a pinching motion.

• Re-Arrange Display Order

You can re-organize your monitoring display by arranging the order of the cameras being displayed. In multi-size displays (for example 6 and 7 split viewing modes), you can also transfer cameras from the smaller displays to the large ones and vice versa. To do so:

1. Tap and hold the channel you want to move.
2. The channel's image will slightly shrink, indicating the image is being "held".
3. Drag your finger over the screen to move the channel to the desired location on the split view.
4. Release the channel by removing your finger from the screen.

• Move Layout Up and Down

The DW Client app allows you to monitor up to 128 channels simultaneously. The split screen options offer up to 16 channel view to prevent detail loss by displaying smaller and more granular splits. To view all 128 channels, you can select any split view mode and scroll up and down the display area to load more cameras. To do so:

1. If you select the view all sites, the split mode will automatically switch to 16 channel split, with each column representing a different site (tap here for more information).
2. Select the split mode you want for to view.
3. Select which sites and cameras you want to monitor by clicking on them or drag-and-drop them into the display area.
4. Tap your finger on the screen and hold.
5. Drag your finger up to scroll down the display area.
6. Drag your finger down to scroll up the display area.

• Instant Search

You can instantly jump to playback for a selected channel. To do so:

1. Tap and hold your finger on the channel you want to search for five (5) seconds.
2. The Instant Playback options window will appear. Select from the following:
 - View video from 1 minute ago.
 - View video from 10 minute ago.
 - View video from 30 minute ago.
 - View video from 1 hour ago.
 - Select date and time to view.
3. The monitoring view will automatically go to the selected playback time.
4. If date and time was selected, the playback screen will display the calendar search. Scroll up and down to locate the exact date and time you want to search. Select 'Search' to load video or cancel to exit.

April	14	2011		02	41	50
May	15	2012		03	42	51
June	16	2013	AM	04	43	52
July	17	2014	PM	05	44	53
August	18	2015		06	45	54
September	19	2016		07	46	55
October	20	2017		08	47	56
				Search	Cancel	

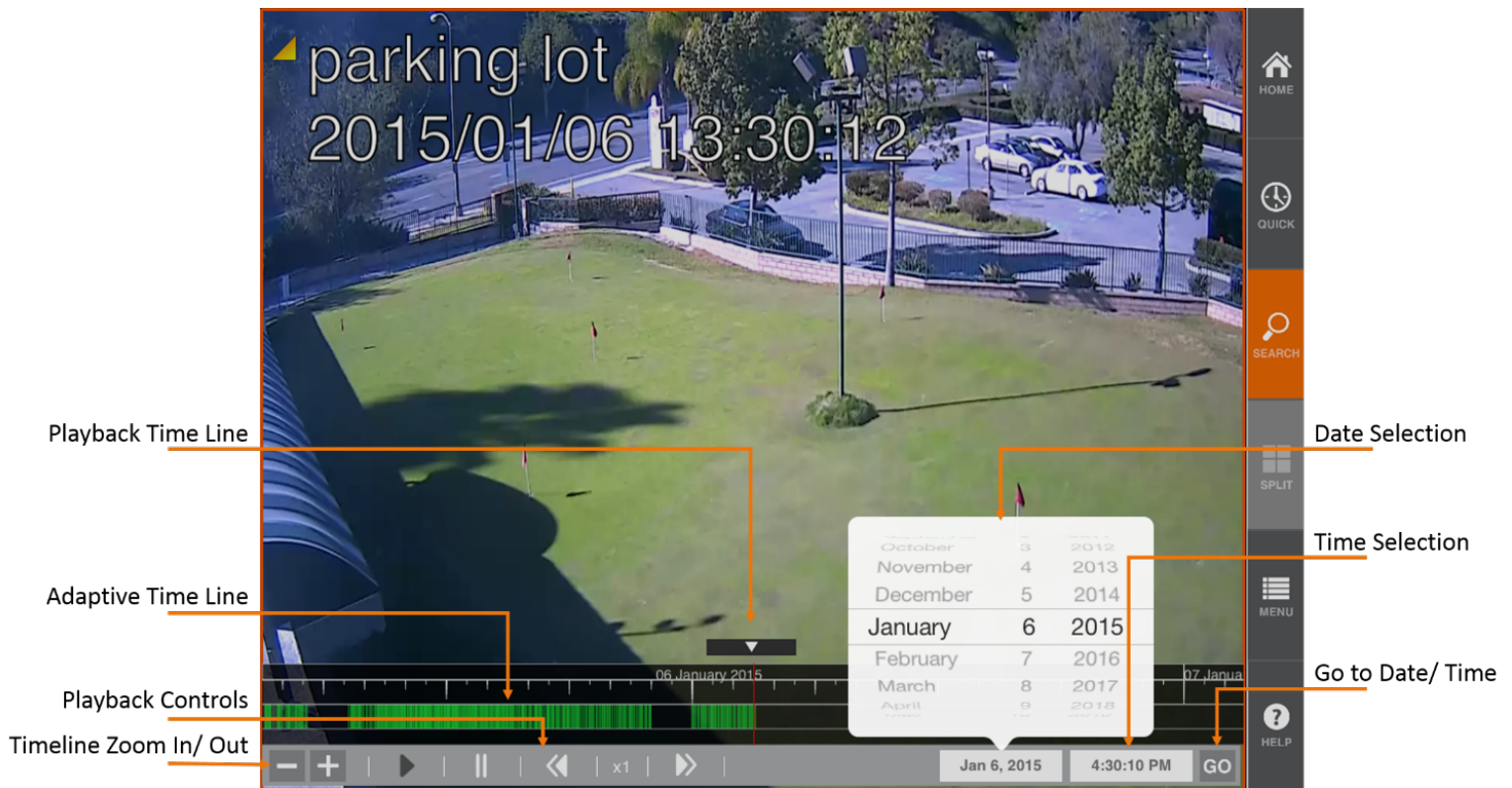
<div>Instant Search</div> <div>Select Search Time</div>
1 Minute
10 Minute
30 Minute
1 Hour
First Data
Select Date/Time
Cancel

• Camera's Information

The camera's main information can be viewed while monitoring the system. This includes the site's name, camera's name, live/ playback indication, display resolution, IP and MAC address and date and time. To view the camera's information:

1. Select a camera from the display. Selected camera view will be highlighted with a yellow frame.
2. A small arrow will appear next to the camera's name on the upper lefthand side of the screen.
3. Press the arrow to display the camera's information window.
4. To hide the information, tap anywhere on the screen.

Search/ Playback View



Tel: +1 (866) 446-3595
Fax: (813) 888-9262

DW DIGITAL
WATCHDOG®
Complete Surveillance Solutions

www.digital-watchdog.com
sales@dwcc.tv

FUNCTION		DW® MOBILE™ (iOS)	DW® MOBILE™ PRO	DW® MOBILE™ (Android)
Number of Sites		Unlimited	Unlimited	Unlimited
Number of Viewing Channels		View up to 16 Channels Simultaneously		View up to 128 Channels Open at One Time View up to 25 Channels Simultaneously View up to 25 Channels Open at One Time
Layout Options		Single, 4, 6, 7, 8, 9, 10, 16, Single Channel in Live and Playback		
Multi-Site Layouts		Save Favorite Layouts		
Live	Single Site	yes	yes	yes
	Multi-Site	yes	yes	yes
	View All Sites	yes	yes	yes
	View All Favorites	yes	yes	yes
Operational	Pinch-to-Zoom	yes	yes	yes
	GPS	Save Location Service Powered by Google® Maps		
	OSD	Show / Hide OSD in Monitoring Screen		
	Single Channel	yes	yes	yes
	Single Channel Playback During Live Viewing	NA	yes	yes
	Multi-Channels	NA	yes	NA
	Quick Playback	1, 10, 30, 60 minutes		
Playback	Adaptive Timeline Search	yes	yes	yes
	Bookmark	NA	yes	NA
	Fast Forward	NA	yes	yes
	Rewind	NA	DW Mobile Pro 2.0 (coming soon)	yes
	Simultaneous Live & Playback (L/S Mode)	yes	yes	yes
PTZ	Virtual Joystick Controller	yes	yes	yes
	Move to Preset	NA	DW Mobile Pro 2.0 (coming soon)	yes
Export	AVI	NA	yes	yes
	Snapshot	yes	yes	NA
	SMS, Airdrop, Facebook or Email Sharing	yes	yes	NA
Password Protection Screen Lock (Required Password When App Re-Launches)		NA	yes	yes
Digital Zoom		yes	yes	NA
Remember User ID		yes	yes	NA
Auto Log In		yes	yes	NA
Supported Devices	Blackjack® Blade™	Full Support for Solutions Running DW Spectrum® IPVMS		
	Blackjack® Bolt			
	Blackjack® Cube™ LX			
	Blackjack® Cube™			
	Blackjack® Cube™ DL			
	Blackjack® E-RACK™			
	Blackjack® S-RACK™			
	Blackjack® P-RACK™			
	Any Server Powered by DW Spectrum® IPVMS	Full Support via Direct Integration		
	VMAX® A1™			
	VMAX® IP Plus™			
	VMAX® AHD Core™			
	VMAX® 480™	Via DW Spectrum® Integration		
	VMAX® Flex™			
	VMAX® 960H™			
	VMAX® 960H Flex™			
	VMAX® 960H CORE™			
Technical	Compatibility	Compatible with iPhone, iPad, and iPod touch running iOS 8.0 or higher. This app is optimized for iPhone 6.		Compatible with Android devices running Android 5.0 or higher.
	Size	40.5MB		16MB
Cost		Free	30-Day Free Trial, \$1.99 Purchase	Free